

FOR IMMEDIATE RELEASE

MEDIA RELEASE

23-B Coleman Street
Singapore 179807

Tel. +65 6337 3888
Fax. +65 6337 8958
www.spm.org.sg

**WOOF! WOOF! SNIFF OUT MAN'S BEST FRIEND AT THE *ALL ABOUT
DOGS CHILDREN'S EXHIBITION AT THE SINGAPORE PHILATELIC
MUSEUM***

COMPANY, REG. NO. 199502248C
a National Heritage Board Museum



Singapore, 13 February 2018 – The Singapore Philatelic Museum (SPM) welcomes the Zodiac Year of the Dog with a children’s exhibition titled *All About Dogs* that explores the close bond between dogs and humans, earning them the title of “man’s best friend”. 300 beautiful stamps and philatelic materials from around the world, alongside multisensory interactive exhibits, will tell kids and families more about this amazing animal. This exhibition will be held at the SPM from 14 February to 1 December 2018.

The relationship between man and dog can be traced back to thousands of years ago. Originating from wolves, early dogs fed on the leftovers that humans threw away. Over time, these two species formed a bond of trust, and dogs became domesticated, with man as their pack leader. There are over 200 breeds of dogs today. These are divided into seven groups, each with a specific purpose, namely working dogs, herding, hounds, toys, hunting, non-sporting and terriers.

Ms Tresnawati Prihadi, General Manager of SPM, said, “Stamps are ‘windows to the world’ and very handy tools to learn about the world around us. Through beautiful dog-themed stamps and hands-on interactive stations at our newest exhibition, children and families can discover interesting facts and remarkable stories behind dogs. We hope that our visitors will leave with a greater appreciation of dogs as man’s best friend.”

Exhibition Highlights

The exhibition will feature educational and interactive stations specially catered to children, and a Chinese zodiac stamp section, where beautiful and exclusive Zodiac themed stamps will be on display.

At the interactive stations, children can:

- Role-play as a dog groomer;
- Test the sharpness of a human’s hearing as compared to a dog’s; identify scents;
- See the colour of the world through dog’s eyes;
- Piece together dog stamp jigsaws

At the Chinese zodiac stamp section, visitors can:

- View the latest Zodiac stamps from Singapore, Taiwan, Japan, and even lesser known countries such as the Aland Islands and Liechtenstein;
- Discover the interesting traits of people born in the Year of the Dog
- Find out what the 2018 Earth Dog year has in store for all the 12 animal zodiac signs

Chinese New Year Open House on 17 February 2018 – Free admission and fun programmes for All

Admission to the museum is free for everyone on the second day of Chinese New Year, Saturday 17 February 2018. There will be activities such as a museum quiz and puppy craftwork at the Family Fun

Station. Visitors can take part in a Chinese calligraphy demonstration, and take home a customised couplet. *Feng Shui* Master Tong Noong Chin will be sharing tips on how to have a smooth-sailing year. And visitors can enjoy an exciting performance by the Juboon Lion and Dragon Dance troupe! Details can be found in *Annex 1*.

Details of *All About Dogs* Exhibition 犬狗趣谈

Venue: Singapore Philatelic Museum
23-B Coleman Street, Singapore 179807

Date: 14 February to December 2018

Opening hours: Monday – Sunday
10.00am – 7.00pm

Admission charges: Free admission for Singaporeans and Permanent Residents

Admission charges for tourists:
Adult \$8
Child (3 – 12 years) \$6

Tel: 63373888

Website: www.spm.org.sg

Official hashtags: #allaboutdogsSPM
#singaporephilatelicmuseum

Organiser
Singapore Philatelic Museum

An Institution of
National Heritage Board

Supported by
Ministry of Culture, Community and Youth

Sponsor
Singapore Post

ABOUT THE SINGAPORE PHILATELIC MUSEUM

The Singapore Philatelic Museum officially opened on 19 August 1995, showcasing Singapore's rich philatelic heritage using postal artefacts dating from the 1830s to date. The museum's family-friendly galleries use stamps as windows to introduce Singapore's heritage and culture, as well as the world's. From telling Singapore's story to showcasing pop culture themes, the museum has brought to life many of these philatelic wonders to the public. Exhibitions on show feature a wide range of stamps from the rare collections of world-class philatelists to contemporary collections from around the world. To complement these exhibitions, the museum runs educational programmes, guided tours, school holiday workshops and public programmes. Visitors can go on a journey of discovery on how significant and important the little stamp is in today's world.

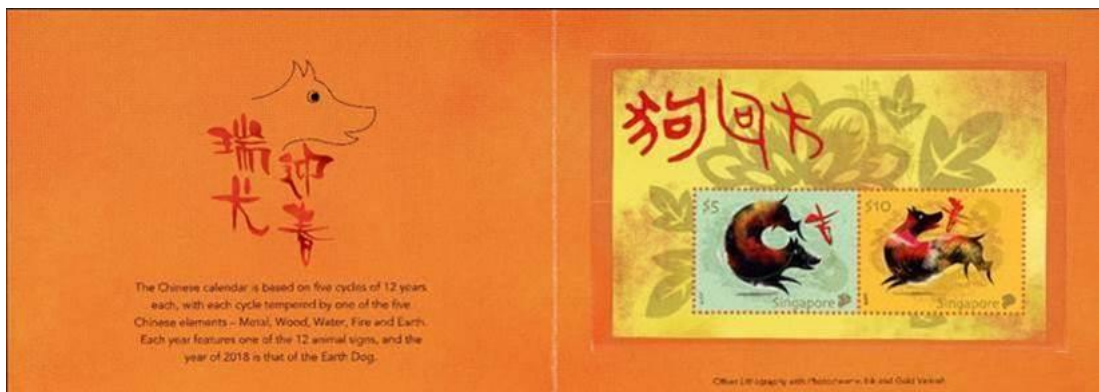
The Mission of the Singapore Philatelic Museum is to stimulate an interest in philately. The museum is a fully-owned subsidiary of the National Heritage Board and an Institution of Public Charter (IPC) Status. For more information, visit www.spm.org.sg.

For media enquiries, please contact

Nuraishah Abu Bakar
Strategic Communications and Digital
National Heritage Board
Tel: + 6332 3475
Email: nuraishah_abu_bakar_from.TP@nhb.gov.sg

Jocelyn Lee
Singapore Philatelic Museum
Tel: +6513 7332
Email: jocelyn_lee@nhb.gov.sg

2018 Year of the Dog



*Zodiac Series – Dog, Singapore
Date of Issue: 5 January 2018*

This first day cover features the Zodiac Series – Dog stamps designed by Mr Leo Teck Chong. It shows graphical illustrations of the dog, and is part of SingPost's Zodiac stamp series that began in 2008.

The collector's sheet is printed with offset lithography with photochromic ink and gold varnish. An imprint of the outgoing rooster and the pig which follows the dog is subtly featured.



*Year of the Dog 2018, Japan
Date of Issue: 1 November 2017*

The two stamps depict an Edo-style small toy dog and a clay toy dog following the Toyama county style.



*Chinese New Year Greetings 2018, Liechtenstein
Date of Issue: 13 November 2017*

This dog-shaped stamp sheetlet (146mm x 208mm) is from the Liechtenstein Principality. Produced in red, following the Chinese symbol for good luck, it is also decorated in gold foil embossing. The stamp is designed as a filigree silhouette and was produced using laser technology.



*Lunar New Year 2018 Stamps, Taiwan
Date of Issue: 1 December 2017*

The stamps show paper-cutting silhouettes of dogs in gold, green and purple in lively poses to reflect the festive atmosphere of the spring dog.



*Chinese New Year Greetings 2018, aland
Date of Issue: 10 November 2017*

The spaniels featured are inspired by the porcelain industry of Staffordshire where in the 1800s glazed ceramic dog figurines were very popular, especially with Scandinavian sailors. The Staffordshire dogs are often shown in pairs.

Different breeds of dogs

Working dogs



Dogs from this group are man's reliable assistants. They help to guard, rescue and even pull. For example, Doberman Pinscher, Siberian Husky, Great Dane, Akita, Alaskan Malamute, Bernese Mountain Dog, Boxer, Bull Mastiff, Standard and Giant Schnauzer, Newfoundland, Rottweiler, Samoyed, Siberian Husky and St Bernard.

Herding



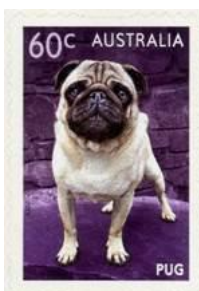
This group has the ability to round up animals like sheep and cattle. For example, Collie, Border Collie, German Shepherd, Corgi and Old English Sheepdog.

Hounds



Hounds are quite varied. They are often used for hunting, by sight or smell. Sight hounds like Greyhounds were hunting dogs in the deserts of the Middle East. Basset Hounds or Beagles are scent hounds. Other examples include Basenji, Borzoi, Dachshund, Harrier, Saluki, Rhodesian Ridgeback and Whippet.

Toys



Most of the smaller dogs belong to this group and they are bred as lap pets. For example, Chihuahua, Yorkshire Terrier, Pug, Chinese Crested and Cavalier King Charles Spaniel.

Hunting



Sporting dogs are very active and make good hunters. As they are no longer involved in this activity, they require regular exercise. For example, Labrador and Golden Retrievers, Pointers, Weimaraner, Setters and Spaniels.

Non-sporting



This group includes a varied range of dogs. For example, Dalmatian, Chow Chow, Poodle, Bulldog, and Sharpei.

Terriers



Terrier, from the Latin word *terra*, means earth. In earlier days, they were sent into burrows after rabbits, foxes or badgers. This group has lots of energy. For example, Jack Russell Terrier, Schnauzer, Airedale Terrier and Cairn Terrier.

Dogs with Jobs

Dogs are more than companions. From herding sheep to border control, trackers for explosives to service dogs, their dedication and loyalty to humans is irreplaceable. Dogs help to guard, track and rescue. They provide security, and their noses track down drugs, explosives, banned food and fruits at immigration check points.



Mail Dogs



In 1888, clerks of New York's Albany Post Office took in a stray dog. They named it Owney. He was attracted to the mailbags and would sleep on them. Owney followed when the bags were sent out on mail trains across the United States and even Canada. He even travelled on steamships to Asia and Europe.

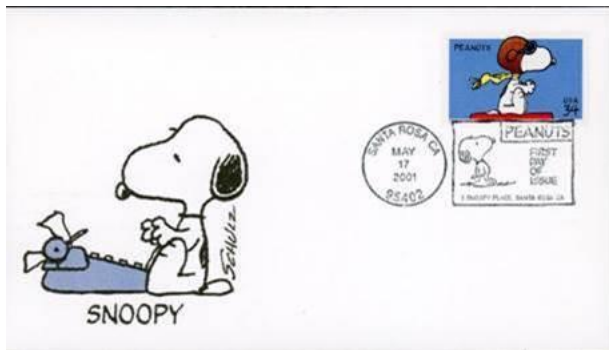
Owney became the unofficial mascot and was considered a good luck charm which kept all the trains safe from accidents. Every time Owney made a journey, postal clerks at different stations would put a tag on his collar. Eventually, he collected so many tags that a jacket was made to hold them. And the badges would jingle everywhere he went.

Space Dog



In 1957, Laika was the first dog to orbit the earth in the Russian space satellite Sputnik 2. After circling earth 2,570 times, the vessel burned up upon re-entry into the atmosphere. The data collected from Laika's flight enabled man to travel further into space and eventually to the moon.

Dogs in Comic Strips



Snoopy



Tintin with his loyal buddy Snowy

Chinese New Year @ Singapore Philatelic Museum

Date: Saturday, 17 February 2018

Time: 10.00am – 7.00pm

Venue: Singapore Philatelic Museum, 23-B Coleman Street, Singapore 179807

Free Admission for all visitors.

Family Fun Stations

10.00am – 5.00pm

Have fun at our Fun Quiz and Puppy Craft booth!

Charges apply.

Chinese New Year Calligraphy Demonstration

11.30am – 12.30pm

Auspicious couplets are usually hung to welcome the Lunar New Year. Watch a calligraphy demonstration and take home a customised couplet!

Charges apply.

Talk by Feng Shui Master

2.00pm – 3.00pm

Join Master Tong Noong Chin for tips to have a smooth-sailing Year of the Dog!

Talk will be conducted in Mandarin.

Chinese Lion and Dragon Dance

3.30pm – 4.00pm

Herald in the Lunar New Year with this thrilling performance by Juboon Lion and Dragon Dance Troupe!