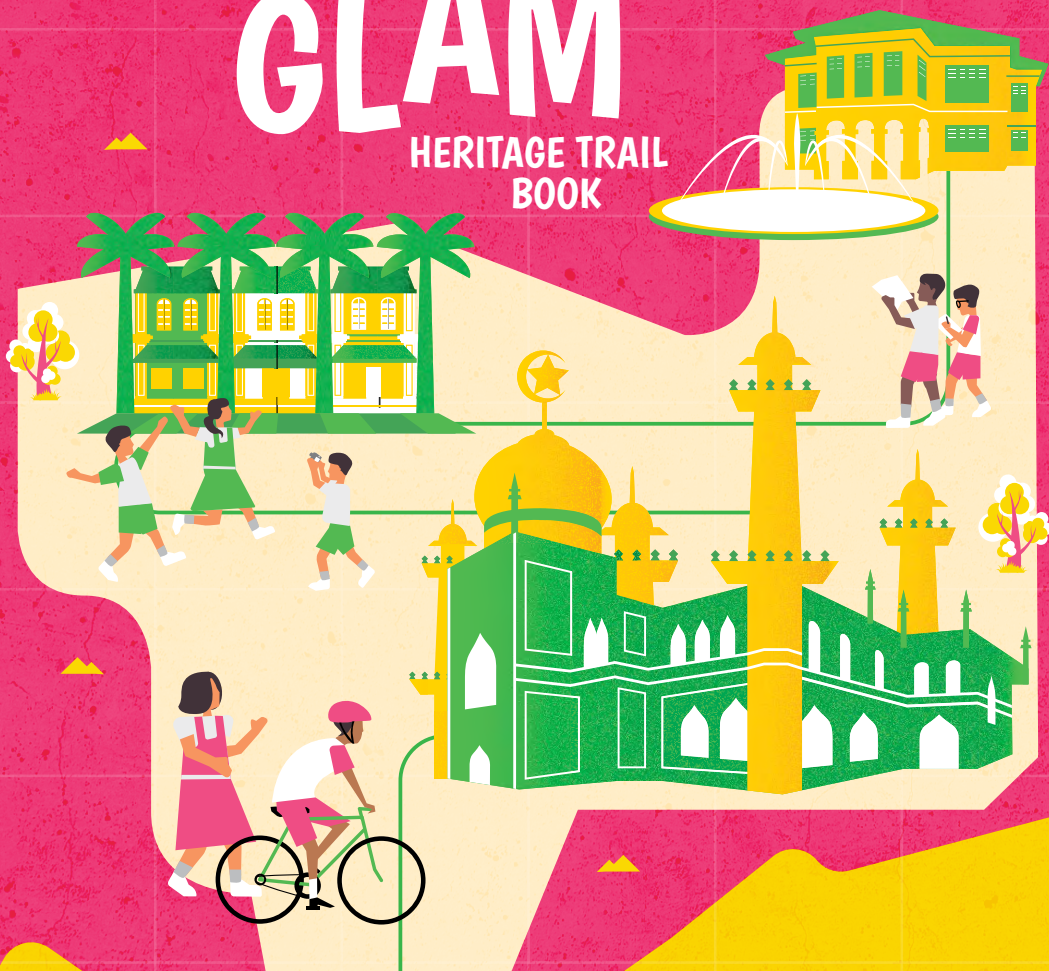


MY KAMPONG GLAM



National
Heritage
Board

HERITAGE TRAIL
BOOK



NAME

CLASS

SCHOOL

KAMPONG GLAM MAP

START

BUGIS
MRT STATION
(350M)

Masjid Sultan

Bussorah
Street

END

Malay Heritage Centre

This is Raj.

He is curious about Kampong Glam.
He asked his friends Sarah and Siti
to explore the area with him.

*Come join them on
this exciting journey!*



Bugis Junction and Bugis MRT were named after the Bugis community, a Malay sub-ethnic group.



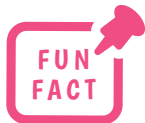
GETTING ITS NAME

Siti's mother once spoke about the naming of Kampong Glam.

It comes from the Malay word *gelam*, the name for the many Cajeput trees in the area.

Spot the uses

Hidden in the leaves above are the many uses of a gelam (*Melaleuca cajuputi*) tree. Can you circle them?

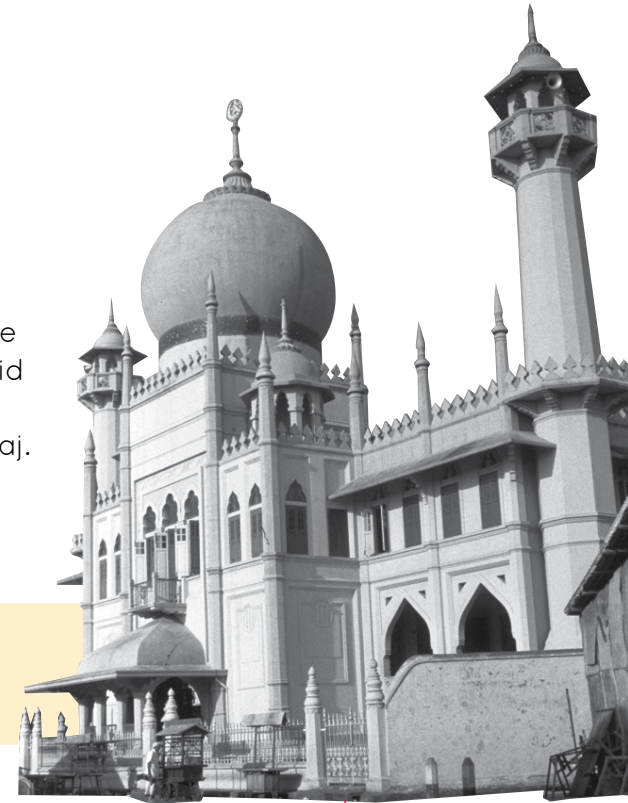


The story of Kampong Glam began in 1819, when Sir Stamford Raffles signed a treaty for a trading post in Singapore.

MASJID SULTAN

As they reached Kampong Glam, Raj saw a giant dome from afar. "That is the Masjid Sultan," explained Sarah.

"Let's go in!" exclaimed Raj.



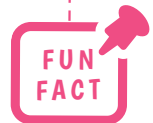
Pick the route to the answer

When is the area around the mosque at its liveliest?



A
B
C

○ RAMADAN ○ NEW YEAR'S DAY ○ NATIONAL DAY



The base of the dome features glass bottles that were donated by the community.

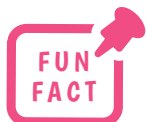


What should you do when you enter a place of worship?

I should

BUSSORAH STREET

After leaving the Masjid Sultan, they came across a vibrant street filled with food and charming shophouses. "What a beautiful place!" said Siti.



The area was once famed for its diverse Malay, Indian, Arab and Chinese residential population before redevelopment in the 1980s.

Identify these traditional items

Match the illustrations to their names:



KERIS
(Dagger)



TEH HALIA
(Ginger tea)



SONGKOK
(Cap)

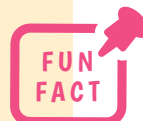


Take a wifie at the row of beautiful shophouses!
#HeritageExplorerSG

MALAY HERITAGE CENTRE



Once they had finished shopping, Raj and his friends went to the Malay Heritage Centre. "There must be more to see and learn in here!" said Raj.



The building was once known as *Istana Kampong Gelam* and home to Malay royalty in Singapore.

What sort of objects belong to royalty?

Pick your favourite from the galleries and draw it below!

PASTE YOUR
ADMISSION STICKER
HERE AT THE END
OF YOUR VISIT.



The English word 'compound' originated from Malay. Explore the *Pustaka Gallery* and find out what that word is:

Raj and his friends enjoyed their excursion around Kampong Glam! They learnt so much about the heritage and culture of Kampong Glam.

What was the most memorable moment of your visit?

My favourite moment.

Draw it here.

CONGRATULATIONS
ON COMPLETING
THE TRAIL!



Bring your
completed trail
book to the front
desk of MHC
to redeem a gift.

ANSWERS:
Pg4 — SPOT THE USES Boats, food seasoning, medicine
Pg5 — PICK THE ROUTE TO THE ANSWER B. Ramdadan
Pg6 — IDENTIFY THESE TRADITIONAL ITEMS 1. Teh Halia (Ginger tea) 2. Songkok (Cap)
J. Keris (Dagger)