

# GET GREEN WITH ACM

The “garden city” vision for Singapore was introduced in 1967 by then Prime Minister Mr Lee Kuan Yew, who hoped to transform Singapore into a city with abundant lush greenery. The ACM Green connects many visitors to the museum through its lawn, plants, and trees. Let's find out more about some of the trees found on ACM Green!

Flowers are yellow and occur in large bunches (15-30 cm long)



Fruits are flattened, disc-like pods with papery wings

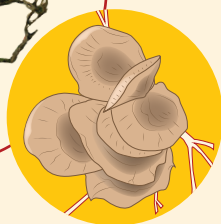


Image reference courtesy of NParks - Flora & Fauna Web ([www.florafaunaweb.nparks.gov.sg](http://www.florafaunaweb.nparks.gov.sg)) and Bobby Oh

## ANGSANA

*Pterocarpus indicus*

The Angsana (*Pterocarpus indicus*) is a large deciduous tree that grows up to 40 metres. The Angsana's crown is dense, dome-shaped, wide-spreading, and drooping.

Buds develop high up on the crown and await a stimulus that triggers them to burst into bright yellow blooms. This brilliant display of colour lasts only for a day, after which the tree lays a soft carpet of yellow flowers on the ground beneath it. The Angsana was widely used as an "instant tree" in Singapore during the 1960s due to its fast growth and ability to root easily from large branch-cuttings.



Bright yellow flowers with purple-brown fruit pods



## YELLOW FLAME

*Peltophorum pterocarpum*

The Yellow Flame (*Peltophorum pterocarpum*) is a medium-sized tree that can grow to 20 metres or more. It has a wide-spreading umbrella-shaped crown, and slightly rough light grey bark. This species is native to Southeast Asia, including Singapore. It is planted along roadsides for its wide crown and bright yellow full blooms, which occasionally cover the entire tree.

Flowers may occur throughout the year for younger trees, but flowering usually occurs only from March to May with a second flush in September to November. Yellow Flame wood is used for light carpentry, such as cabinet making. The bark contains tannins and can be used to create dyes.

## TRUMPET TREE

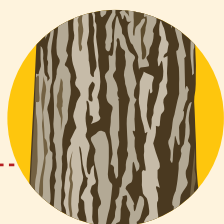
*Tebebuia rosea*

The Trumpet Tree (*Tebebuia rosea*) is a medium to large deciduous tree. You might often see this tree along streets or in parks with a crown full of pink or white flowers. Flowering is typically triggered by heavy rains after a long hot and dry spell, usually between March and April, then again between August and September.

The species is known among locals for providing Singapore's version of sakura (cherry blossoms), due its seasonal flowering and soft-hued blooms. The bark is reported to have antioxidant properties, while the timber is used for furniture and construction.



Pink flowers



Detail of the brown, patterned tree bark

Image reference courtesy of Jasmine Koh, NParks

# ACM GREEN

Look out for these trees the next time you are at ACM.

