

Congratulations!

If you have completed the trail, head down to the ACM Front Desk to get your reward.

Come back on 4, 11, 18, 25 June, between 6 and 9.30pm, to collect another special treat.

While supplies last.



Stamp here to redeem!

Children's Season at ACM:

Into the Night

Illustrated by 8EyedSpud
Developed by ACM © 2022 Asian Civilisations Museum



1 Empress Place Singapore 179555

 [asiancivilisationsmuseum](https://www.facebook.com/asiancivilisationsmuseum)

 [acm_sg](https://www.instagram.com/acm_sg)

www.nhb.gov.sg/acm

This booklet belongs to:

Suitable for ages 7 and up

Hello

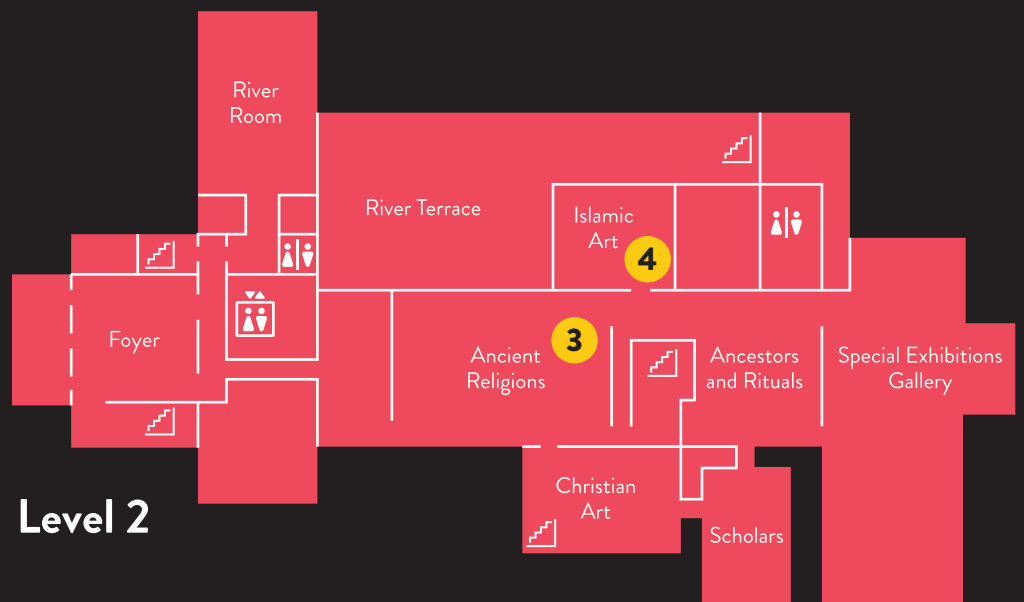
Young Adventurer!

Have you noticed that many things look different at night than during the day? Put on your magic glasses to discover wonders of the night at ACM.

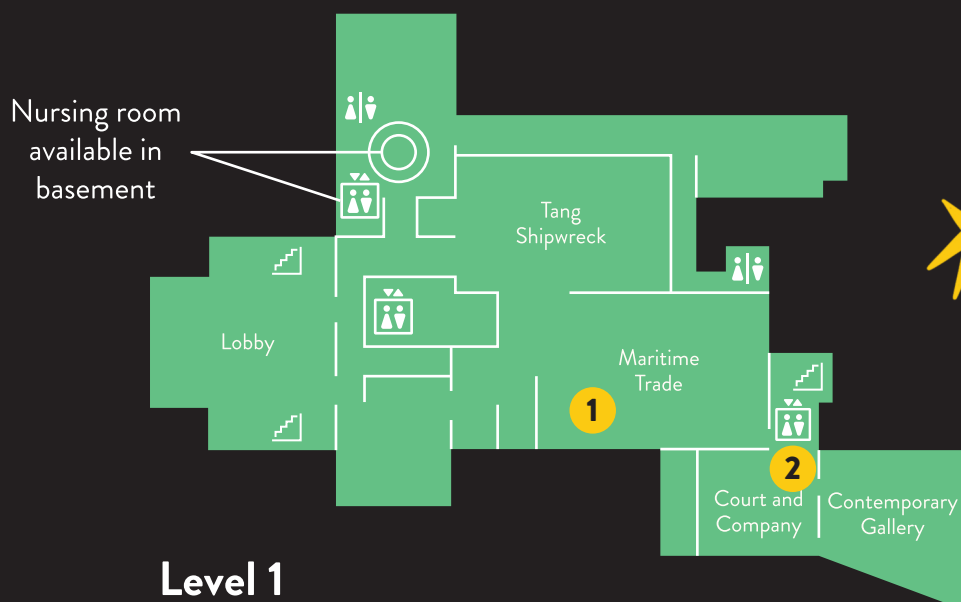
Are you ready to experience ACM in a new way? Here's a map for your quest into the night!



Level 3



Level 2



Level 1

1. Light the Way

As night falls, darkness descends all around you. Brave adventurer, what do you decide to do? Circle all that you will do:



Fumble for
a light switch

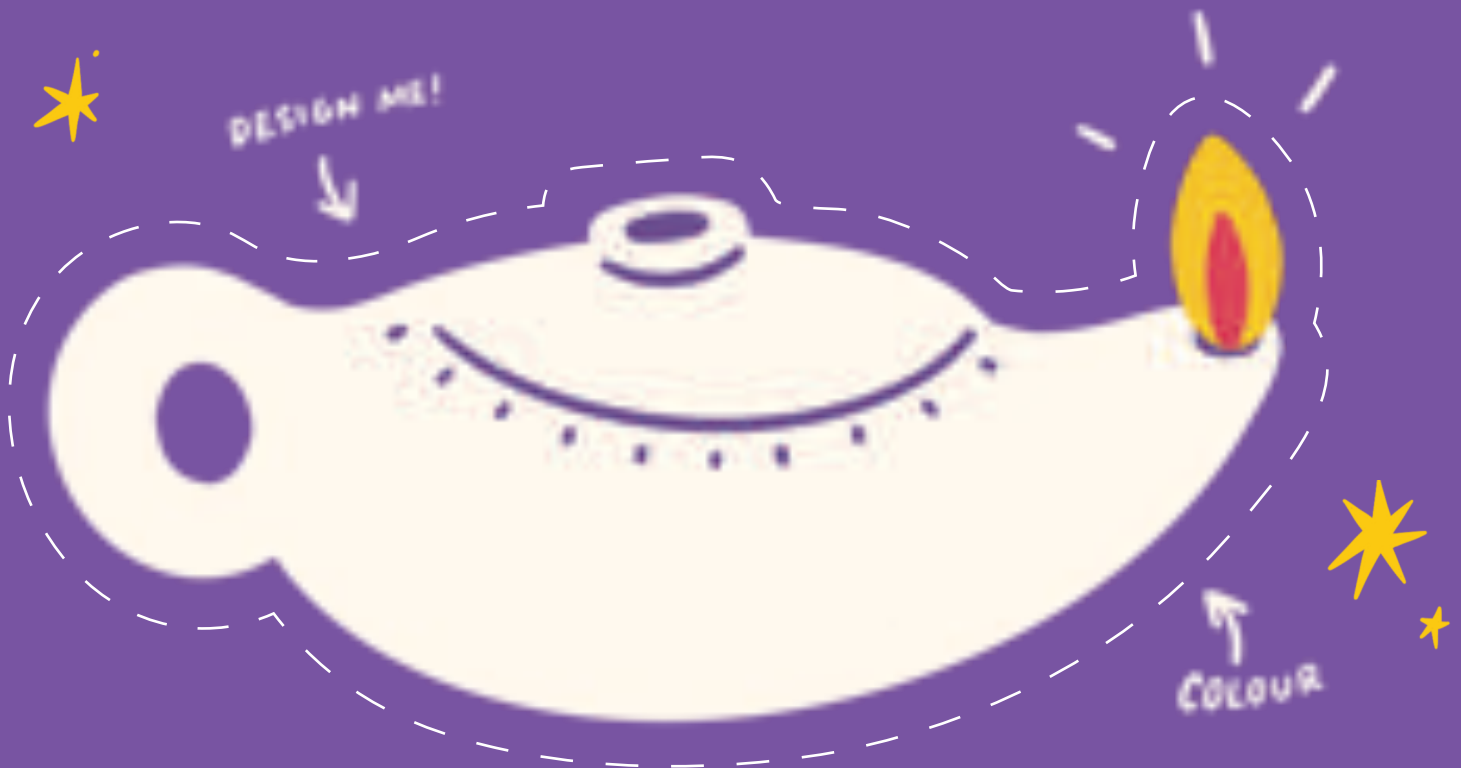


Put on my
night-vision goggles

Press on!
I can see in the dark
without any help



None of the above. I would...



Here's an oil lamp you can use to light the way! Decorate, then cut out along the dotted lines. Now you have an oil lamp to light the way!



Glow in the Dark

Just as you are about to set off on your journey, you see a curious object in front of you and decide to investigate. It is an oil lamp shaped like a parrot!



Parrot-shaped oil lamp
Northern Vietnam,
11th or 12th century
Stoneware
1996-00602
📍 Maritime Trade Gallery



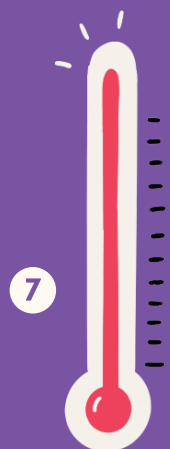
Look closely, can you spot the parrot's beak? Notice the details on the surface of the oil lamp. How has the artist made it look more like a bird? What's this parrot sitting on?



How would it feel to hold this oil lamp in your hands? Using the pictures below, try describing it in words!

Fun Fact!

The lotus is a symbol of purity in Buddhism. The plant grows in muddy water, but rises above the mud to bloom a clean and beautiful flower.



2. Cabinet of Curiosities

In the night, things may not always appear the way they seem.
On the outside, this cabinet looks rather plain (look around to the sides).
But when the doors are opened, a lush world is revealed!



Cabinet

India, probably Agra, around 1640

Rosewood, ebony, ivory, iron

Purchased with funds from Dr Reshma and
Mr Aziz Merchant, 2013-00164

📍 Court and Company Gallery



Imagine opening each drawer,
what surprises might be hidden inside?
Do you have a similar cabinet at home?
What items are kept in it?

The inside is decorated with rows of flowers made by inlaying
pieces of ivory. **How many drawers can you count?**

Fun Fact!

The designs on this cabinet were
popular during the Mughal emperor
Shah Jahan's reign (1627–58).

Flower designs like these can be
found in the famous Taj Mahal, built
by the emperor in memory of his
beloved wife, Mumtaz Mahal.



**You discover one of the
drawers is locked!
Design a magical key
that can open any lock.**



What Comes Next?

Peer closely at the decoration on the inside of the cabinet. What observations can you make?



A

B

A

B

Decoration on objects often has repeating patterns. This row has an A-B-A-B pattern, with two images repeating.



What other kinds of patterns do you see on the cabinet?
Create your own pattern here using shapes you like.



--	--	--	--



“Symmetry” is when a pattern looks exactly the same on one side as on the other – like a mirror image. Complete the pattern to form a symmetrical design.



3. Into the Unknown

Going into the dark night can mean exploring the unknown, which can make some people uncomfortable. What about for you?



Vessantara Jataka Scroll
Sopha Pangchat (1909–1966)
Northeast Thailand, 1959–60
Paint on cotton
1997-02933
📍 Ancient Religions Gallery

Fun Fact!

This painting is about 31 metres long. That's nearly the length of two buses!

This painting tells the story of one of the Buddha's past lives. Here he is a very generous and kind prince named Vessantara.

He gave away everything he owns, including the kingdom's treasured white elephant. His father sent him away into the forest as punishment.

In this scene, Vessantara walks on foot into the wilderness with his wife and two young children.



What do you see in this painting?
Circle and name all the animals you can spot.



How do you think the journey through the mountain was like for the prince and his family? Why do you think so?



Building Up Courage

Is there anything you used to be afraid of, but now aren't anymore? We can all overcome our fears by facing them, one step at a time. You can do it!



Step into Prince Vessantara's shoes and journey through this forest (maze). See how many of the animals you can meet along the way!



4. Star Light, Star Bright

Brave adventurer, look up to find your guiding lights!
What do you think this object has to do with the night? (Hint: Stars)



Planispheric astrolabe
Iran, 19th century
Copper alloy
1999-01562
📍 Islamic Art Gallery



This object is called an astrolabe. It is an ancient calculating tool used to tell the time, figure out where you are, and even chart your horoscope. Today, what do we use to help us find our way?

To use an astrolabe, hold it up to the night sky and turn the front part to align with the stars and planets you see above you.



The astrolabe on display has been deconstructed to show you what each part looks like.

ACTIVITY



Connect the picture to the part it belongs.



Front



Middle



Back

Seeing Stars



Ancient Muslims used the positions of stars to locate the direction to Mecca (the holy city of Islam, in Saudi Arabia) so they could know what direction to face during prayers. This prayer direction is called the qibla.



Connect the dots to find out which two group of stars can help you locate north and south!



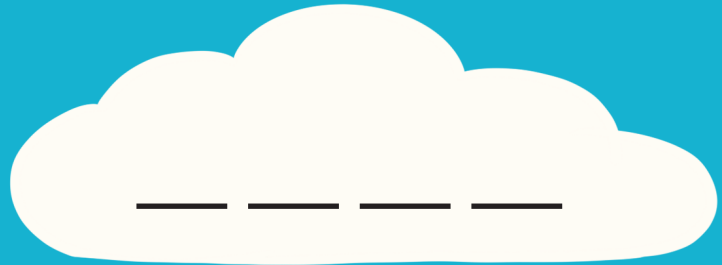
Polaris, the North Star (only visible north of the Equator), is the brightest in a group of stars called the Little Bear (or Little Dipper). Facing it means you are looking in the direction of north.

The Southern Cross (only visible south of the Equator), is made up of four bright stars that form a cross. By calculating out to the left of it, you can tell how to go south.



5. Fly High

Fang-tastic for making it this far! You have seen the stars – let's descend onto pillowy clouds. Search for this object. Then write down what flies among the clouds?



Great job, brave adventurer! An adventurer is not only curious, but also learned. **Why do you think the Chinese potter decorated this vase with bats?**

They believed bats bring good fortune, because “fortune” and “bat” sound the same in Mandarin.

Vase with bats amid clouds
China, 18th or 19th century
Porcelain
From the Xiang Xue Zhuang Collection
in memory of Dr Tan Tsze Chor
2002-00085
📍 Ceramics Gallery



<https://go.gov.sg/la-ceramics>

This vase is made of porcelain, the most prized type of ceramic. Scan the QR code to watch a short animation on making ceramics.



Let's trace these Chinese characters and sound them out.



Psst! They are both pronounced as "fu".

Bat To The Bone



Can you spot all the fun facts about bats below?

U	M	L	P	I	N	D	W	B	A	T	O	H	S	W
Q	E	C	H	O	L	O	C	A	T	I	O	N	E	R
W	X	I	C	B	R	I	N	F	Y	D	B	O	N	E
F	C	H	R	P	E	N	G	L	E	E	A	C	V	W
D	T	S	D	F	N	Q	B	E	G	H	T	F	A	E
N	P	M	L	Y	G	C	N	N	R	L	P	I	N	S
O	F	R	Q	W	L	A	R	O	T	C	O	N	E	R
C	I	D	E	L	C	V	T	F	M	N	I	G	H	T
T	X	P	B	F	O	A	N	I	I	M	A	E	N	Y
U	S	L	T	K	N	U	F	L	O	W	E	R	S	X
R	T	Y	U	I	H	G	L	D	S	A	X	P	E	U
N	E	W	L	Q	P	O	M	E	C	V	W	E	P	I
A	R	L	A	M	M	A	M	O	P	R	D	A	I	O
L	O	S	Q	W	E	I	H	S	E	L	O	K	R	P
P	I	K	D	G	W	Q	C	Z	V	B	G	H	J	L

Can you find these words? The words can go in any direction.
Mammal; Echolocation; Nocturnal; Pollinator; Finger

Wondering about these bat facts?

A bat is a flying **nocturnal** mammal. It “sees” in the dark using **echolocation**. They send out sound waves through their nose or mouth. They have four **fingers** and a thumb (just like humans!), and their wings have a thin layer of skin stretched across them. At night, some plants are dependent on bats as a **pollinator**, and to spread their seeds.

6. Home Sweet Home



Almost done! You're near the end of this adventure.
Would you like to end it on a sweet note?



Bracelet

Timor Island, late 19th or early 20th century
Gold
Gift of Mr Edmond Chin, 2002-00554
📍 Jewellery Gallery

This is a bracelet made from gold.
Spot that tiny house perched right
at the top?



What kind of person do you think wore
this? Would you want to wear it? What
do you think the house represents?

This type of bracelet was worn by
noblemen. The house symbolises the
universe, society, and everything
around us. Jewellery has many
different meanings in Southeast Asia
(and everywhere). *How does wearing a
piece of jewellery feel?*



Design your own
bracelet here.

What Makes You Happy?

What is home to you? What makes you happy? Is it your family, your toys or your “chou chou” (childhood toy that you sleep with), or the smells that come with it.



Draw something in the box below that makes you feel happy and secure.



↑
FAVOURITE
CANDY



←
CUTE
PUPPY



↑
FUNNY
BOOK