

ARTY FACTS

CABINET WITH IMAGES OF ADAM AND EVE

Sri Lanka, late 17th century

Ivory, teak, silver mounts, 45.2 x 55 x 34.3 cm

This cabinet was made by Sri Lankan ivory carvers for the Dutch. It shows scenes of animals and plants in the Garden of Eden, the setting for the creation story of the Christian Bible.

When the cabinet is opened, two panels showing Adam and Eve can be seen on the insides of the doors. Eve takes the apple from the serpent, as three birds fly overhead. A bird, dog, and turtle sit on the ground, with fish and a *makara* at the bottom edge.

The fronts of the seven drawers are each carved with a procession of animals, including elephants, lions, antelopes, monkeys, wild boar, and birds.



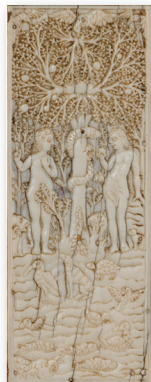
EXPLORE THE GARDEN

Lions and elephants roam the garden. Many animals shown here can be found in Sri Lanka and throughout Asia.

This cabinet was made in Sri Lanka. It has a wooden structure, and is decorated with carved ivory panels. It shows the Garden of Eden, a paradise in the Christian Bible, where the first humans were created.

Spy with your little eye

the cabinet in the Christian Art Gallery.



LOOK closely at the cabinet.
Can you spot the following animals?

ELEPHANT LION BIRD
WILD BOAR TURTLE DOG



COUNT the number of drawers on this cabinet. What would you store in them, and why?



IMAGINE you are in the Garden of Eden with the first humans, Adam and Eve, and all the animals. Describe the sights, sounds, and smells that you experience there.



CREATE your very own animal finger puppets!

Instructions

COLOUR the animals. **CUT** along the ----- ✂ dotted lines.



Example

JOIN the tabs (A + B) together and fit them around one of your fingers. Notice where the ends meet, then **GLUE** or **TAPE** them together to complete each puppet.

