

ACM

MEET ME AT ACM

Suitable for ages 9 to 12



MEET THE QILIN

The *qilin* is a mythical creature in Chinese and other Asian cultures. It usually has a head like a dragon's. Their bodies have scales and are often shaped like a deer or horse, with the tail of an ox. *Qilin* have hooves for feet. Their cries sound like the tinkling of bells and chimes. *Qilin* come in a variety of colours, and are said to be gentle and kind creatures.

ARTY FACTS

DISH WITH AUSPICIOUS CREATURES

Made in China around 1662–1722, during the Qing dynasty
Porcelain

A *qilin* (麒麟) and phoenix are at the centre of this dish, surrounded by other mythical creatures. The *qilin* and phoenix are auspicious creatures in Chinese culture, and people believed that they would appear only in times of peace and prosperity.

This type of multicoloured decoration on porcelain is called *wucai* 五彩 (five colours). But really the number referred to the use of many colours, not exactly five.

Wucai porcelain was first produced in the Ming dynasty (1368–1644). Later on, during the Qing dynasty, when this dish was made, potters (people who made ceramics, which is also called “pottery”) introduced new ways to enhance the *wucai* decorations, such as using black colouring.

Produced by the Asian Civilisations Museum
1 Empress Place Singapore 179555
www.acm.org.sg
© 2021 Asian Civilisations Museum

SPY WITH YOUR LITTLE EYE

The *qilin* on a colourful plate in the Ceramics Gallery.



Through these activities, your child/student will learn to:

- Generate and express ideas through language and art
- Communicate, interact and build relationships with others

LOOK closely at the creatures on this dish. How do they look different from the animals you know of?

CIRCLE the words below that describe a *qilin*.

Majestic

Calm

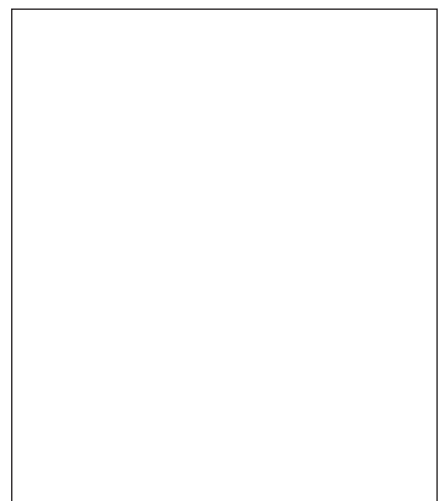
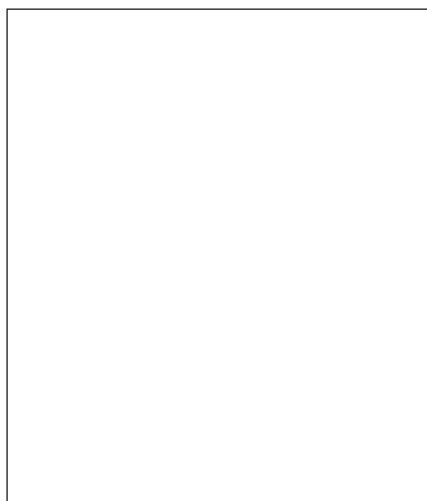
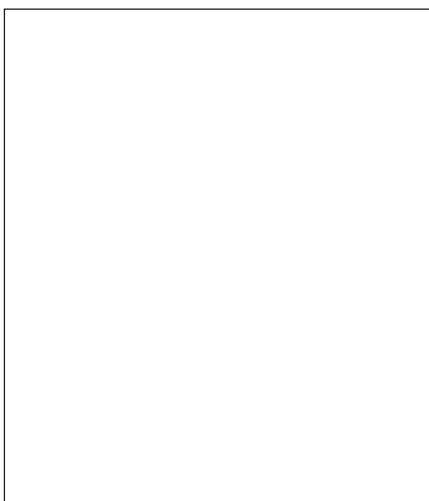
Fearsome

Furry

Fast

Happy

IMAGINE the creatures talking to each other. What do you think they would say? Try to imitate the sound a *qilin* might make!



CREATE your own comic strip about a day in the life of a *qilin*. You might want to use the icons below to help you. If you have a public account, don't forget to tag us @ACM_SG.

Qilin



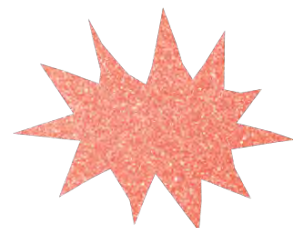
Speech bubbles



Talk



Thought



Scream