

MY FASHION DESIGN JOURNAL

ANDREW GN

FASHIONING SINGAPORE
AND THE WORLD

THIS ACTIVITY BOOKLET BELONGS TO:

Suitable for ages 7 and up

HELLO YOUNG DESIGNERS!

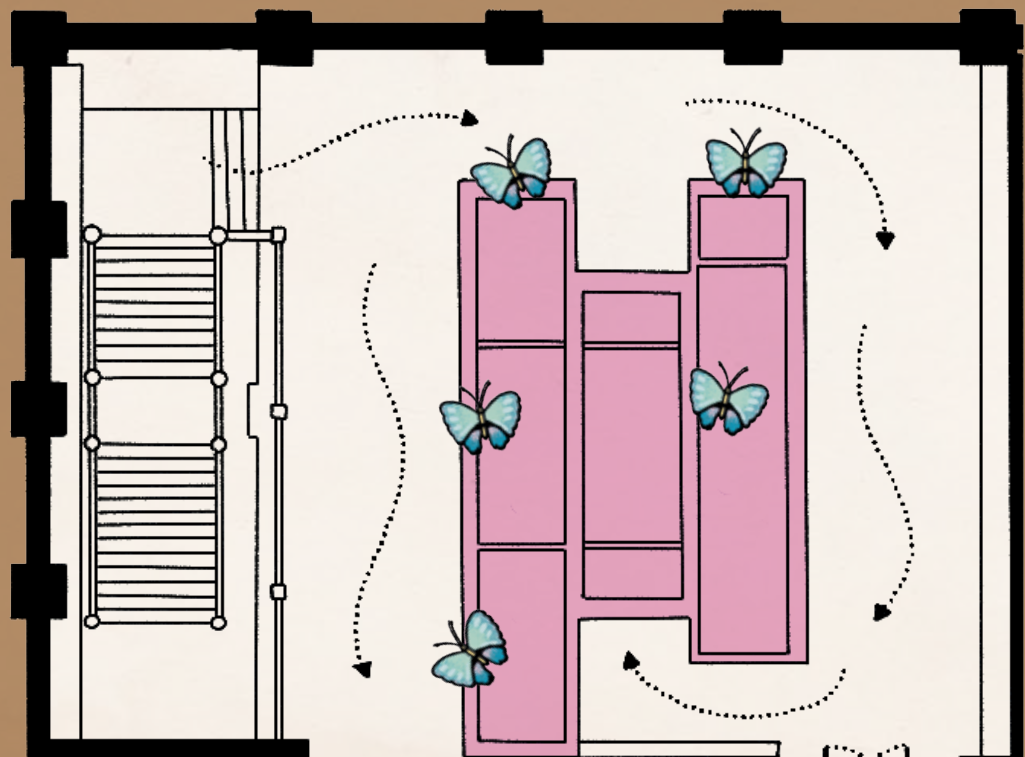
We are about to embark on a journey that will introduce you to Andrew Gn's stunning masterpieces. Andrew Gn was born in Singapore. As a child, he was always fascinated by the beauty of costumes and clothes. At 20 years old, he packed his bags and headed to London to pursue his designing dreams. Since 1995, Andrew Gn is the first and only label by a Singaporean to show consistently at Paris Fashion Week — where many of the world's best designers showcase their designs.

In this trail, you will learn more about the influences and craftsmanship that go into producing Andrew's designs. You will discover his creative process, create a fashion journal, and design your very own outfit.

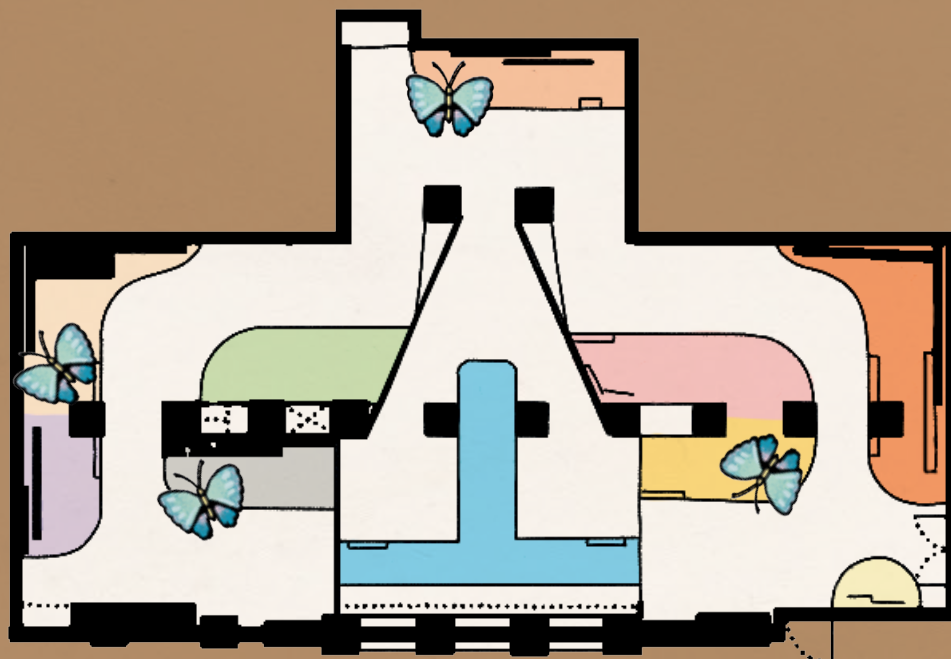
Are you ready? These maps will help you.



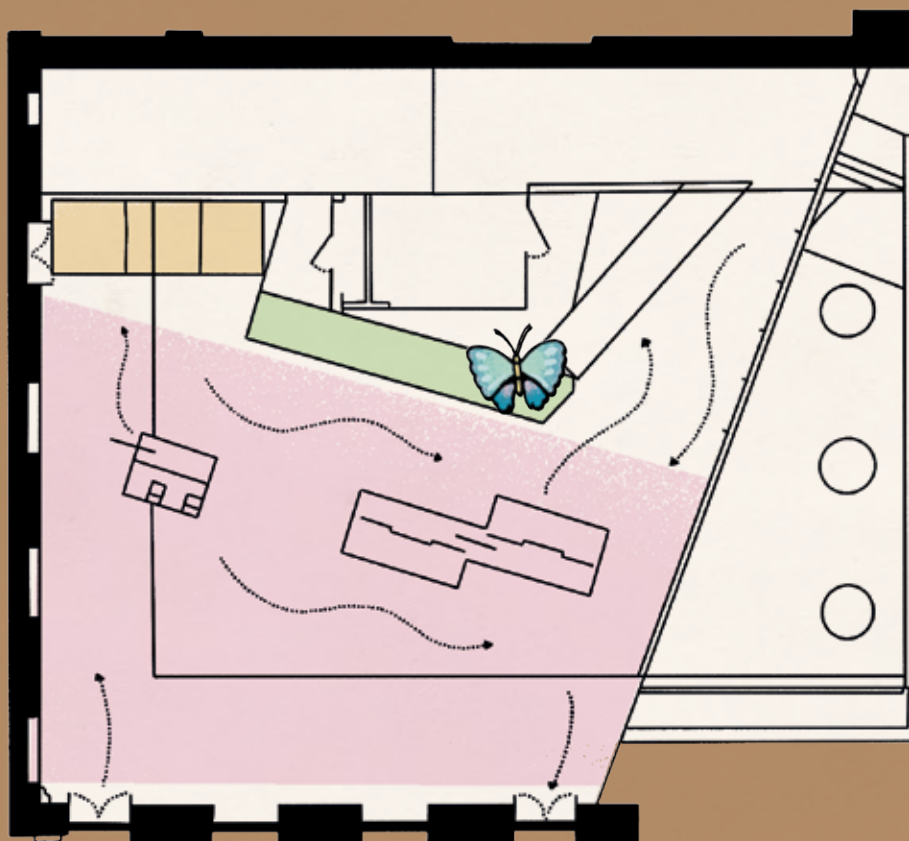
LEVEL 2 FOYER



**LEVEL 2
SPECIAL
EXHIBITIONS
GALLERY**



**LEVEL 1
CONTEMPORARY
GALLERY**



The first step in any design project is to do your research. As you explore the galleries, think about the colours, shapes, silhouettes, or motifs that appeal to you. Take a picture or sketch it anywhere on the booklet.

There are no right or wrong answers. Take a note of whatever makes you happy, and have fun!


TWINKLE, TWINKLE LITTLE STARS



The cheongsam was invented in Shanghai in the 1920s, and remains popular in Chinese communities around the world. In the past, it was cut from a single piece of cloth and flowed all the way down to the ankles, with slits on either sides. Today, cheongsams come in many different silhouettes and styles.

CHEONGSAM WITH STARS

The World of Suzy Wong Collection,
Fall-Winter 2019
Acetate, viscose, embroidered glass beads

 Foyer, Level 2



These design elements are commonly found on cheongsams. Match each element to the description below.

DIAGONAL TOP

MANDARIN COLLAR

FROG CLOSURES



WHAT IZ-NIK?




This ballgown features floral designs that were inspired by **Iznik** ceramics, which were made in Turkey from the 15th to 17th century. Gardens and flowers were important visual elements in the Islamic arts of Ottoman Turkey (around 1299–1922), especially tulips, which symbolised beauty and paradise. Designers get inspiration from everywhere and anything!



What designs/shapes/motifs stand out to you the most?

BALLGOWN WITH TULIPS, CARNATIONS AND SAZ LEAVES

Resort 2016
Polyester-cotton jacquard,
embroidered silk thread, sequins

 Foyer, Level 2



What designs would you add to the gown to create your own garden wonderland?



Iznik is a town in Turkey. It sits on the site of an ancient Greek city, Nicaea, which Alexander the Great personally named after his wife! They are famous for their ceramics, which Andrew collects and displays at his home in Paris.

BUTTERFLY LOVERS




The butterflies and flowers on this gown were inspired by a Chinese **porcelain** bowl from about 200 years ago, which Andrew's father passed down to him. His love of Chinese art came from accompanying his parents on overseas trips to art galleries and auction houses.




BUTTERFLIES ON THE PORCELAIN BOWL

GOWN WITH BUTTERFLIES

Jingdezhen Collection,
Spring-Summer 2016
Printed silk georgette crepe,
embroidered rhinestones

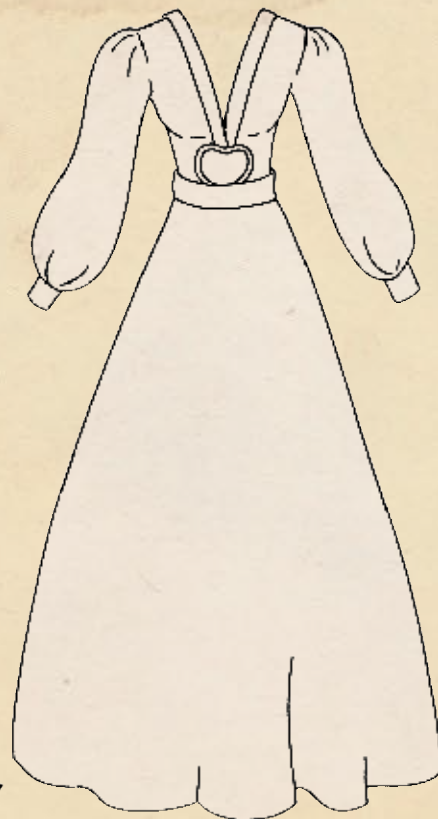
 Foyer, Level 2

 **Spot the butterflies on this gown. How different or similar are they to ones you have seen before?**

Fun Fact: The butterfly is a house code — a signature visual element — in Andrew Gn's designs. It comes from his love of Chinese art and *The Butterfly Lovers* (梁山伯与祝英台). In the tale, it symbolises love, beauty, and transient joy.



If you had a house code, what would it be? Draw it to decorate the gown here.



Porcelain is a type of durable, white ceramic that was invented in China.

GOING GAGA




This striking colour was worn by Lady Gaga! It is made from delicate guipure lace, designed by Andrew's studio and made in small quantities in a specialised atelier in France.

Some designs are meant to communicate a specific message. This mini dress was made in 2021 to communicate joy, pleasure, and optimism during the COVID-19 pandemic.

MINI DRESS WITH COLLAR

May There Be Light Collection,
Spring-Summer 2021

Acetate-viscose crepe, cotton
guipure lace, embroidered
rhinestones, glass beads

 Foyer, Level 2



Which of these words speak to you the most? Circle them in the word search below and carry them into your designs.

HOPE

F L F M V T T Z B E A U T Y

BEAUTY

A O Y A Q M U M Z G E O O H

LOVE

I V O S I O P O L I T A N O

RADIANT

T E H D R A D I A N T O L P

FAITH

H R B W G B H T Y G Y E H E

SHOULDERS IN SHAPE



Many influential women around the world, from Hollywood and Asian celebrities to European royals, have chosen to wear Andrew Gn for important occasions.

Recently, actress Lily J Collins wore this chic black outfit in the Netflix drama *Emily in Paris*, which has received much attention for its portrayal of the fashion of title character.



What do the shoulders of this jacket look like?

SLEEVELESS MINI DRESS, JACKET WITH "PAGODA" SHOULDERS

Hope and Glory Collection,
Fall-Winter 2021
Dress: acetate, viscose; jacket: wool,
embroidered glass beads, metal

Foyer, Level 2



Join the dots to find out what inspired these shoulder shapes.

Costume from Khon theatre, a form of court dance dating to Thailand's Ayutthaya period (1350-1767).



Spot more "pagoda" shoulders on the next page!

DOTTI OR NICE?



The lively natural scene on this coat is inspired by early 20th-century batiks from the north coast of Java.




What motifs can you spot on this dress? Circle them. Psst. They are hidden all over the page.

COAT WITH DRAGONFLIES, BUTTERFLIES, AND LOTUS POND

Pan Asian Collection, Spring-Summer 2003

Linen, printed batik, suede appliqué, embroidered silk cord

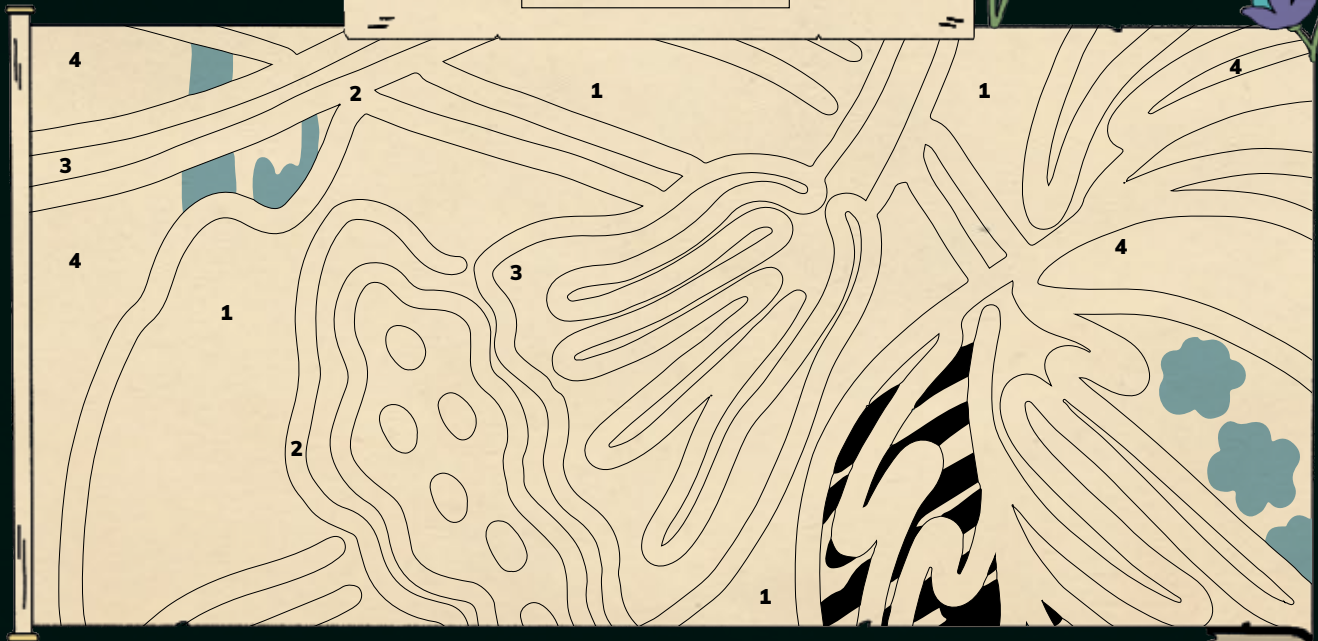
 Special Exhibitions Gallery, Level 2



Recreate a part of the dress by colouring in the numbers.

- 1 — DARK BLUE 3 — BROWN
2 — ORANGE 4 — LIGHT BLUE

Get creative and add your own flower patterns!



ROCK THAT ROCOCO!



This gown is decorated with glass beads and jewels sewn on the upper body portion and shoulder straps. It features pastel colours and flower designs.

It reimagines the **Rococo** style of Madame de Pompadour, who was influential in French court in the mid-18th century.



Rococo is an art style from France that was popular in Europe in the mid-18th century. It is known for its very decorated and detailed style, usually with elegant pastel colours and floral designs.



Look closely at the skirt. The floral design is carefully matched at the centre seams on the front and back.



Complete the right side of the skirt, which is a mirror image of the left.



BUSTIER GOWN WITH FLOWERS

The Secret Modern Life of
Madame de Pompadour Collection,
Spring-Summer 2020
Polyester-cotton brocade, embroidered glass beads

Special Exhibitions Gallery, Level 2



Fun Fact:
Madame de
Pompadour
was a Rococo
style icon and

tastemaker, whose fashion
inspires Andrew Gn.

TIMELESS WATERLILIES



SHIFT DRESS WITH WATERLILIES

Nippon and Memphis Collection, Spring-Summer 2015
Silk-polyester, embroidered glass beads, sequins

Special Exhibitions Gallery, Level 2



What motifs can you spot on the dress?



How would you reinterpret the designs on the dress? Sketch or colour in your versions below.

WATER LILIES

POND

SKY



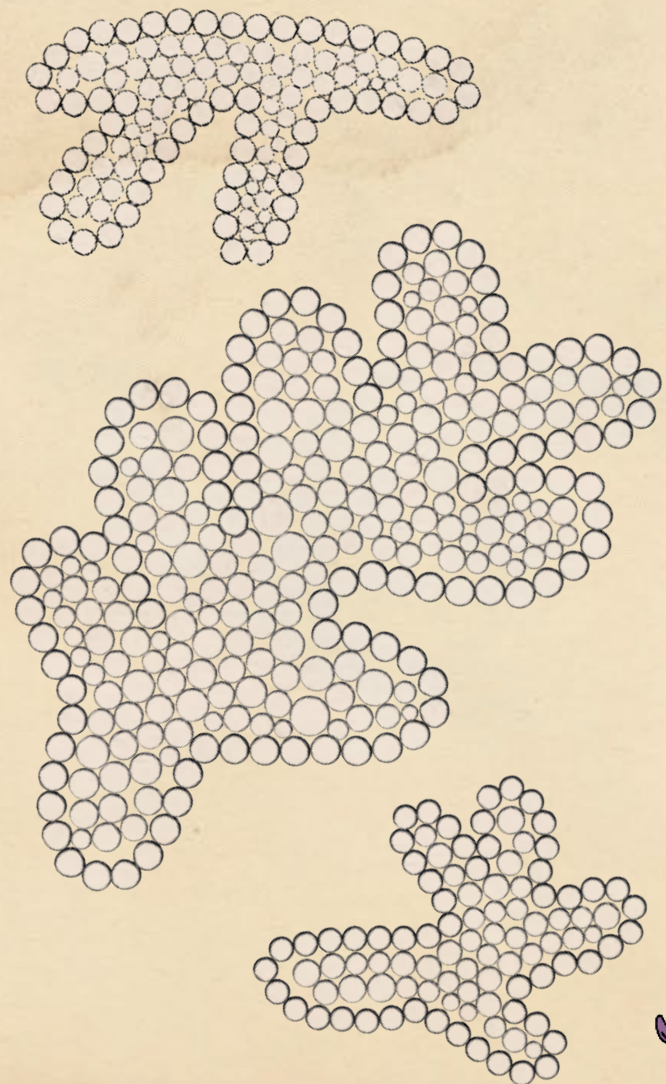
PEEK A BOO, I SEA YOU



Can you recognise the coral motifs on this dress? They were created with sequins and embroidered glass beads. Coral is a house code (a signature visual element) of Andrew Gn's label, which he grew to love from watching documentaries about the Great Barrier Reef, and growing up by the sea in Singapore.



Fill up the sequins on the coral motif with your favourite colours!



COAT WITH CORALS

Hommage a Tony Duquette Collection,
Spring-Summer 2005
Linen, embroidered glass beads, sequins



Special Exhibitions
Gallery, Level 2


GROWING FLOWERS

From fabrics to buttons, Andrew's studio designs everything in-house. The Contemporary Gallery on Level 1 recreates the processes that went into designing the Spring-Summer 2023 collection, which this gown is from.



GOWN WITH AMARYLLIS FLOWERS

Voyage AGN Collection,
Spring-Summer 2023
Acetate-viscose crepe, embroidered
sequins and rhinestones

 Contemporary Gallery,
Level 1



Below are the steps Andrew follows when designing a dress. Each designer's process is different. What would yours be?

From 1-6, number your process in the circles below.

1. Andrew Gn sketches
2. Chooses fabrics to get more ideas
3. Makes a test garment to see the dress
4. Design embellishments
5. Matches embellishments to sketches
6. Sends samples for production

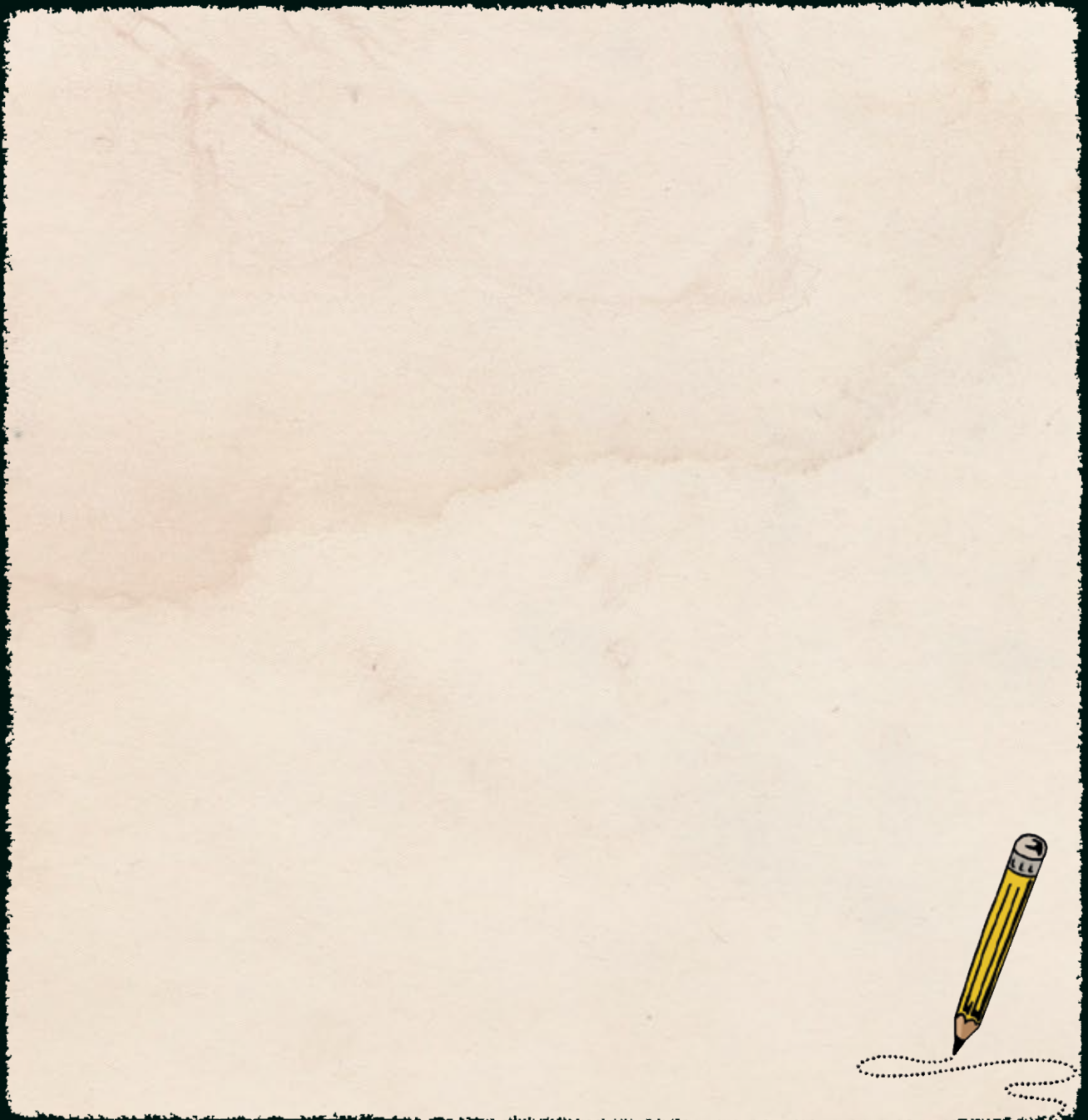
- ☐ Choose fabrics
- ☐ Design embellishments
- ☐ Make a test garment
- ☐ Match embellishments
- ☐ Sketch
- ☐ Produce outfit





Almost there! **You explored ten masterpieces today.**

Now it's your turn to design your own outfit. What words or messages would you like to convey? What was your favourite silhouette? Which motifs stood out to you, and where would you like them to go? Finally, what colours would bring the piece together, and who do you imagine wearing it?



Psst... Designers make many sketches when creating a piece. Take your time, and be proud that you have completed your very first fashion journal!



Pick up a free Radio Frequency Identification (RFID) bracelet from Front Desk with every special exhibition ticket purchased, and collect motifs that inspire you through the various galleries.

Design an outfit with your collected motifs at the Augmented Reality (AR) photobooth Fashion Try-On in the Contemporary Gallery for a photo takeaway!

Register your bracelet at the Lobby or Foyer to start.

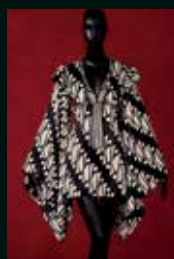


CHECK OUT THESE OTHER PIECES ON THE RFID JOURNEY!



SWEATER WITH FANS, SKIRT WITH KABUKI ACTORS

Harajuku Collection, Spring-Summer 2018
Sweater: cotton, embroidered sequins; skirt: printed cotton



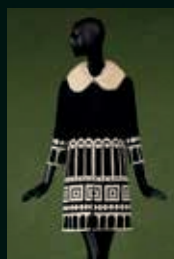
DRESS WITH KIMONO SLEEVES AND BATIK PATTERN

Pan Asian Collection, Spring-Summer 2003
Printed synthetic crepe



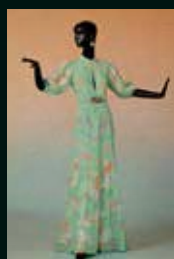
SLEEVELESS BLOUSE AND PATCHWORK SKIRT

Peggy Guggenheim Collection, Spring-Summer 2014
Blouse: silk georgette; skirt: cotton jacquard with grosgrain trim



COAT WITH COLLAR

Viennese Secession Collection, Fall-Winter 2007
Wool crepe, silk appliqué, fur



GOWN WITH BUTTERFLIES

Resort 2020
Silk crepe printed, vintage lace appliqué



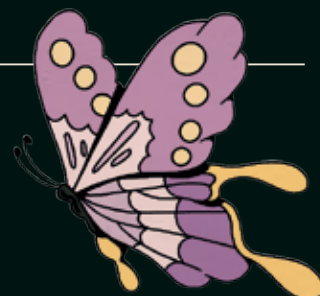
CAPE WITH GRIFFIN, SHORTS

Blue Bird and Mythology Collection, Fall-Winter 2020
Wool, embroidered metal and glass beads, sequins



WHAT'S ON

Scan the QR code to find out what programmes will be running throughout the exhibition





SUPPORTED BY



MAJOR SUPPORTER

FARFETCH

Developed by ACM © 2023

1 Empress Place Singapore 179555



asiancivilisationsmuseum



acm_sg

www.nhb.gov.sg/acm

Illustrated by JAEYYELLE