

N M  
S  
National Museum  
of Singapore

WHAT  
IS NOT VISIBLE  
IS NOT INVISIBLE

Featuring selected artworks from the French Regional Collections  
of Contemporary Art (FRAC)

Now till 19 February 2017

#visibleinvisible

**Artfully Fun for Families**

---

Recommended for 5 to 12 year olds

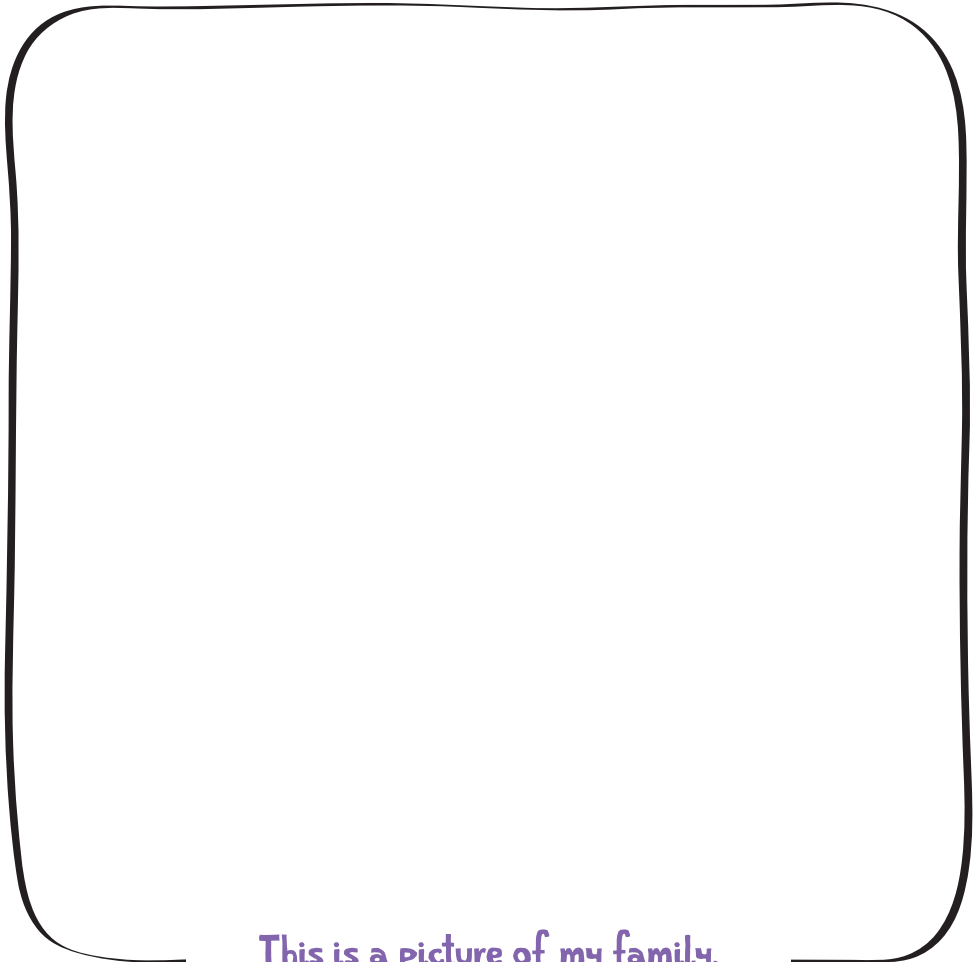
My name is

---

I am visiting the museum with my

\_\_\_\_\_ , \_\_\_\_\_ , \_\_\_\_\_ ,

and \_\_\_\_\_ today.



This is a picture of my family.

# Welcome to the

## *What is Not Visible is Not Invisible*

exhibition. There are 34 artworks selected from the French Regional Collections of Contemporary Art (FRAC).

---

### How can you enjoy the artworks with your child?

Here are three tips to get you started.

1

Be **open-minded**. Allow your child to experience the artworks, create meanings, make connections and express their thoughts and ideas freely.

2

**Encourage** your child to interact with the artworks. Get them to imitate the expressions or actions of the characters featured in the artworks, or to draw the lines, shapes and patterns that they observe.

3

**Play I-SPY** with your child: Select an object that your child can see, but do not reveal the object yet. Provide the first hint and let your child guess the object. For example, "I spy with my little eye something that is blue." Provide more hints if necessary.

# MUSEUM *Etiquette*



**Look** at and **observe** the artworks closely.



**Talk softly** and **walk quietly** in the galleries.



**Touch only** objects that have signs that allow this.



**Use only pencils** in the gallery to prevent leaving permanent marks.



**Take photographs** without using flash.



Enjoy your food and drinks **outside the gallery.**

**Discuss** with your children other rules that you would like them to follow on this family trip.

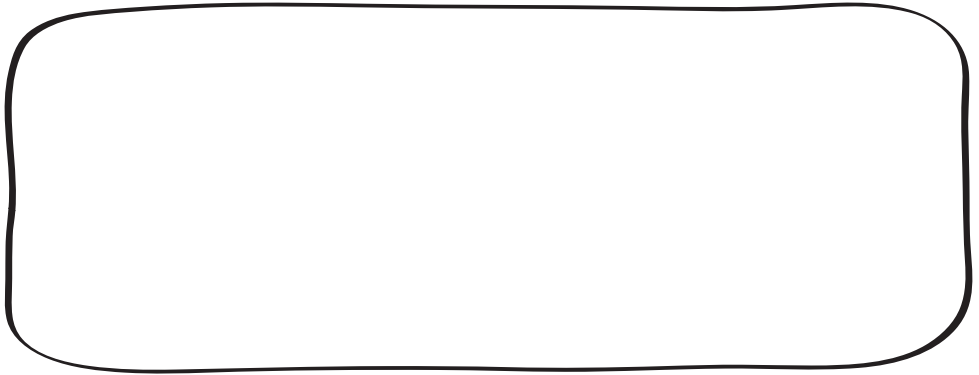
# YOU AND I, HORIZONTAL

ANTHONY MCCALL

## Did you know?

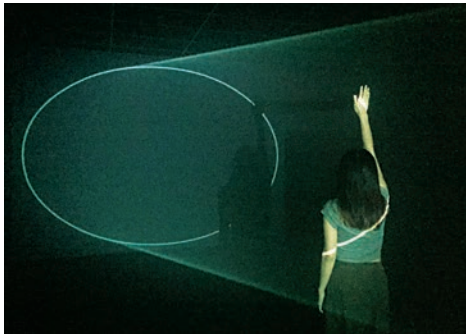
Anthony McCall got his inspiration for this digital animation when he was watching a movie in the cinema. As he was seated in the last row, he saw beams of "solid light" shining across the room towards the screen and as smoking was allowed in the past, he saw how light and smoke could change the physical properties of a space.

Draw the lines, shapes or patterns that you observe in the box below.



## Try it out!

Trace the lines projected on the wall using your body.



A visitor interacting with *You and I, Horizontal* by Anthony McCall

## Find them!



What equipment did the artist use to create this artwork? **Search** for their names in the puzzle below.

B	T	V	C	Q	Z	M	D	R	D	O	D
G	K	X	O	I	O	W	Y	D	C	A	T
B	P	R	S	T	Y	S	I	Q	A	J	S
W	Z	L	C	Q	F	P	M	K	A	E	R
S	M	O	K	E	M	A	C	H	I	N	E
I	A	W	R	F	C	X	F	J	B	E	D
P	P	R	O	J	E	C	T	O	R	W	Z
O	F	M	E	G	Z	S	L	M	U	I	L
B	V	C	O	M	P	U	T	E	R	B	Q

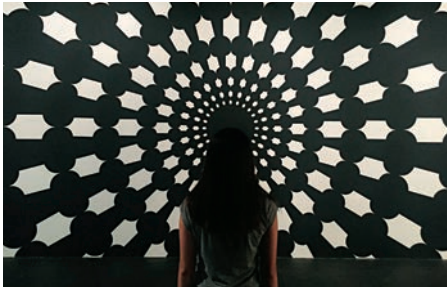
# AFTER DM

PHILIPPE DECRAUZAT

## Did you know?

The way you see the artwork reflects your state of mind at this very moment!

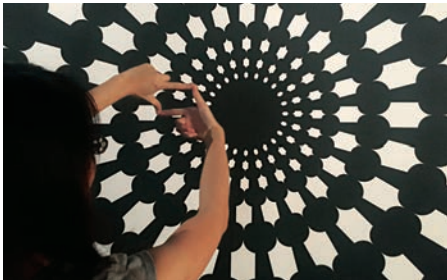
## Try it out!



Have someone stand in the middle of the artwork. What do you **see**? Tick your answer.

- A tunnel where the eye is sinking into a black hole
- An explosion from the centre of the figure

## Just for fun!



Focus on the artwork by making a viewfinder with your fingers!

Images above: A visitor interacting with *After DM* by Philippe Decrauzat

## Have an Artful Conversation!

Do you think the background is black or white? How would you describe this artwork to a person who hasn't seen it? (e.g. colours/shapes/patterns)

# PLUS DE LUMIÈRE

CLAUDE LÉVÊQUE

## Try it out!

Stand in the middle of the circle, and **strike** a pose that represents how you feel.



An installation shot of *Plus de lumière* by Claude Lévêque

## Have an Artful Conversation!

What do you think of when you see this artwork?  
What title would you give it? How does it make you feel?

# SPEECH BUBBLES

PHILIPPE PARRENO

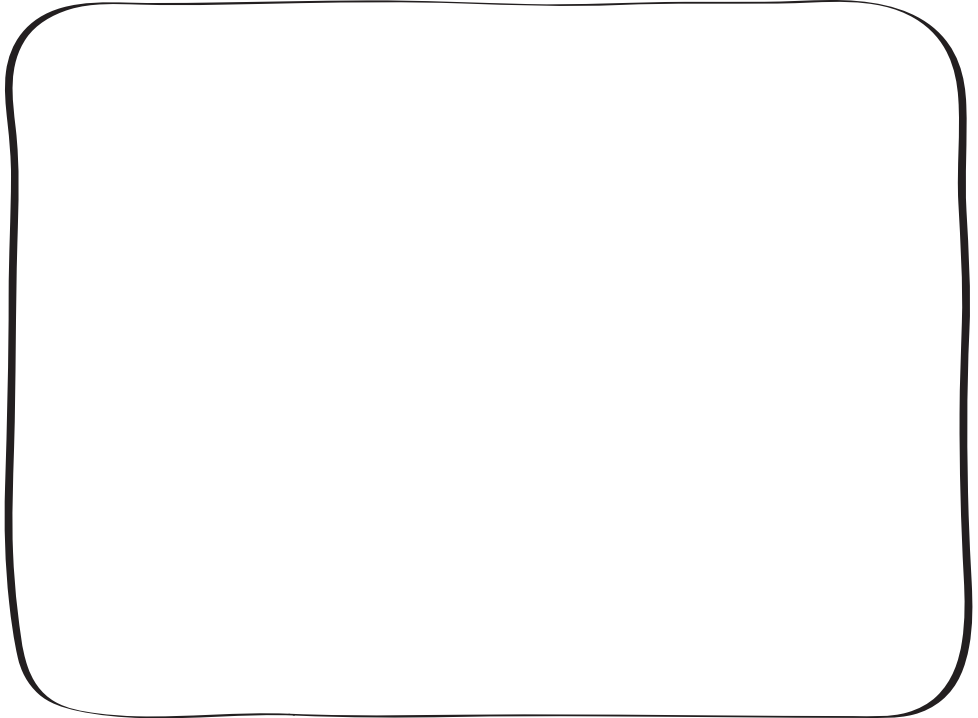
## Did you know?

*Speech Bubbles* was originally created for people to write their own slogans\* during a rally.

*\*Slogan: A simple and catchy phrase that is typically used to accompany a logo or brand.*

## Try it out!

**Think** about what you would like to say to someone. **Draw** your own speech bubble below and **write** what you would say in it.

A large, empty speech bubble shape with a thick black outline, intended for drawing and writing a slogan.



# REPULSE BAY

*DOMINIQUE GONZALEZ-FOERSTER*

## Did you know?

Repulse Bay is a beach in Hong Kong. Why do you think the artist chose to represent it this way?

## Just for fun!

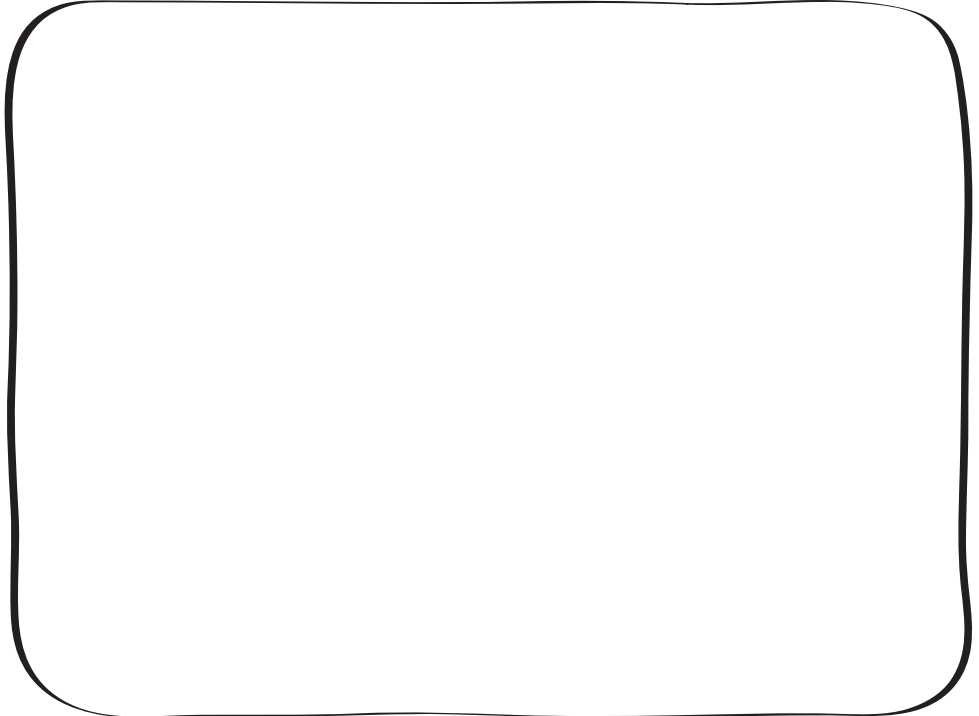
What do you think this place could be? List three places.



What could you and your family do here? Think of an action and take turns to **act** it out!

## Try it out!

What would you like to bring/add into this art space? **Draw** it below.



# TIME AFTER TIME

ANRI SALA

## Did you know?

The story behind it: *Time After Time* is an expression of how fast the world is moving and how we may forget the presence of nature.

**STOP.**

**WAIT...**

**OBSERVE.**

**Take some time to watch this video carefully.**

**Write down a word that best describes how you feel after watching this video.**

---

## Have an Artful Conversation!

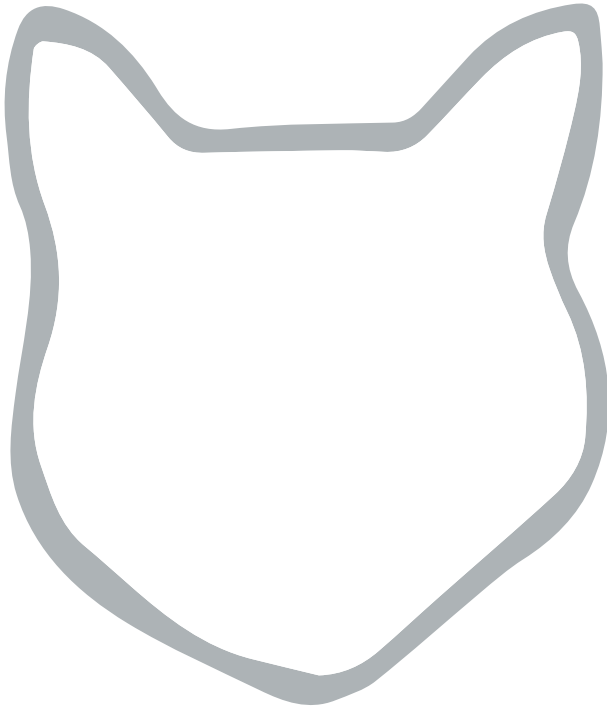
What do you see? Where do you think this video was filmed?  
What happened in the video? What do you think the artist is trying to show?  
Why do you think the artist decided to take the video?

# PHOTOMATOU

ALAIN SÉCHAS

- 1 **Observe** the different expressions of the cats.
- 2 **Pick** one that best represents you.
- 3 **Bring** it home and design it!

If you were the artist, what other expression would you add to the work? **Draw** it below.



## Have an Artful Conversation!

Where do you think the artist got his idea from?  
Why do you think other people should see this work?

# VISITOR INFORMATION

## Exhibition Opening Hours

10am – 7pm (from 1pm on Thursdays; last admission at 6.30pm)

## Admission

Free admission for Citizens, Permanent Residents and visitors aged 6 years and below

Others

Adult \$8

Student & Senior aged 60 & above with valid ID \$4


## Wheelchair Access and Lockers

Lifts provide easy access to galleries. Lockers are available for visitors' use. Please enquire at the Visitor Services Counter.

## Connect With Us

#visibleinvisible

 nationalmuseum.sg

 National.Museum.of.Singapore

  natmuseum\_sg

Presented by

**N S M**  
National Museum  
of Singapore

**PLATFORM**

Supported by



**INSTITUT  
FRANÇAIS**

A Parallel Project of



The National Museum is an institution of



Supported by



With support from

**LEE FOUNDATION**



**DOMINIE PRESS**



Official Hotel



**INTERCONTINENTAL®**  
SINGAPORE