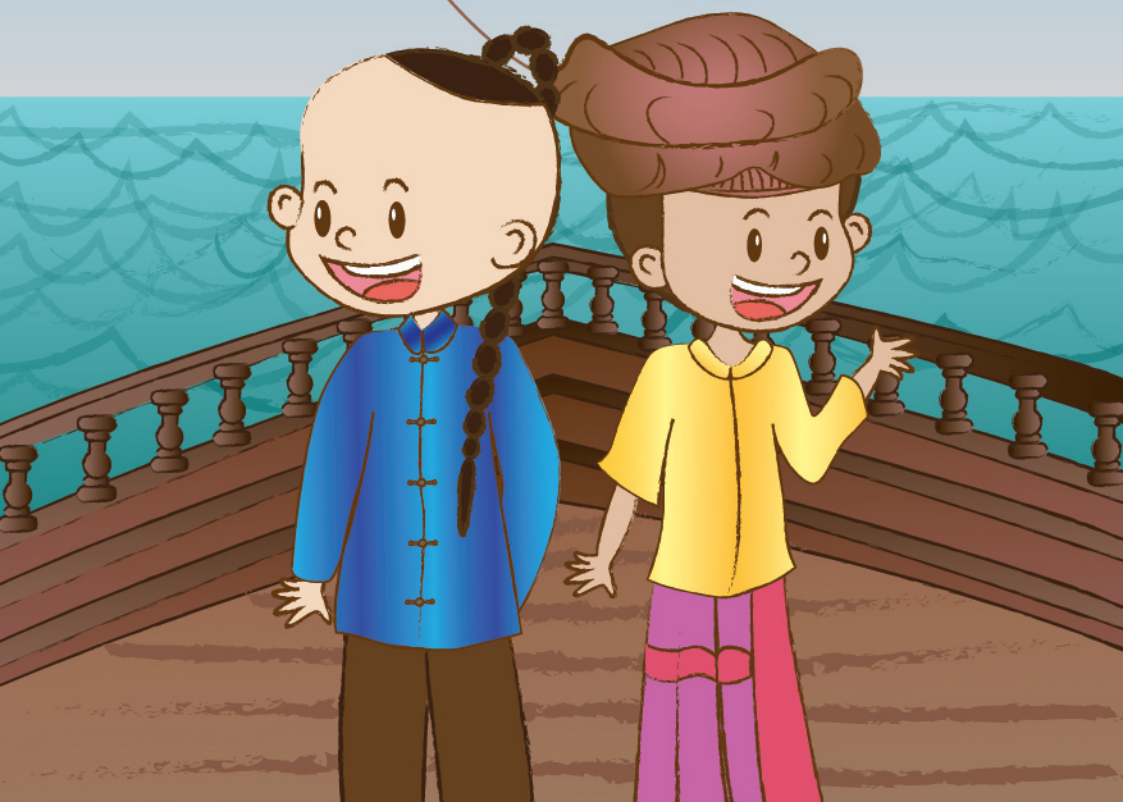


N S M
National Museum
of Singapore

Family Trail
Recommended for
ages 5 and up

An Old New World

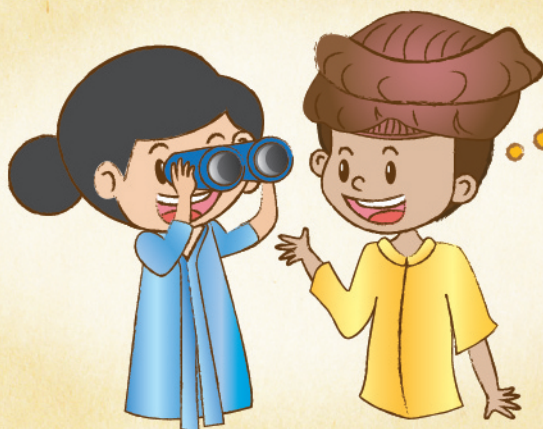
From the East Indies to the
Founding of Singapore, 1600s–1819



WELCOME EXPLORERS!

Join us as we sail back in time to the East Indies (South and Southeast Asia) over 400 years ago! What was it like to be an explorer at sea?

As you explore the exhibition:



Imagine what life was like for the explorers and locals



Look out for special family-friendly captions

Take photos without flash

Speak softly and walk quietly

This trail will lead you through the Rotunda on Level 1, and 6 zones in the Exhibition Gallery on the Basement Level. Are you ready? Let's go!

WELCOME TO THE EMPORIUM

Hundreds of years ago, merchants from faraway countries sailed to the East Indies (South and Southeast Asia) in search of valuable goods.

Look into the crates at the Rotunda (Level 1) to discover some valuable goods that were traded!

These items are not found in my country. I can make lots of money by selling them back home!



Next, head to the basement galleries to learn more about how the Europeans sailed to the East Indies to trade!

ZONE 1: BOATS GALORE!

Boats were a big part of the lives of the Orang Laut and the traders who sailed to the East Indies.



- What are the differences between the Malay coastal vessel and the Chinese junk?
- How many different types of boats can you see in the gallery?
- If you owned a boat, what would it look like?

Orang Laut refers to the “sea people” who lived around Singapore, Malaysia, and the nearby Riau islands.



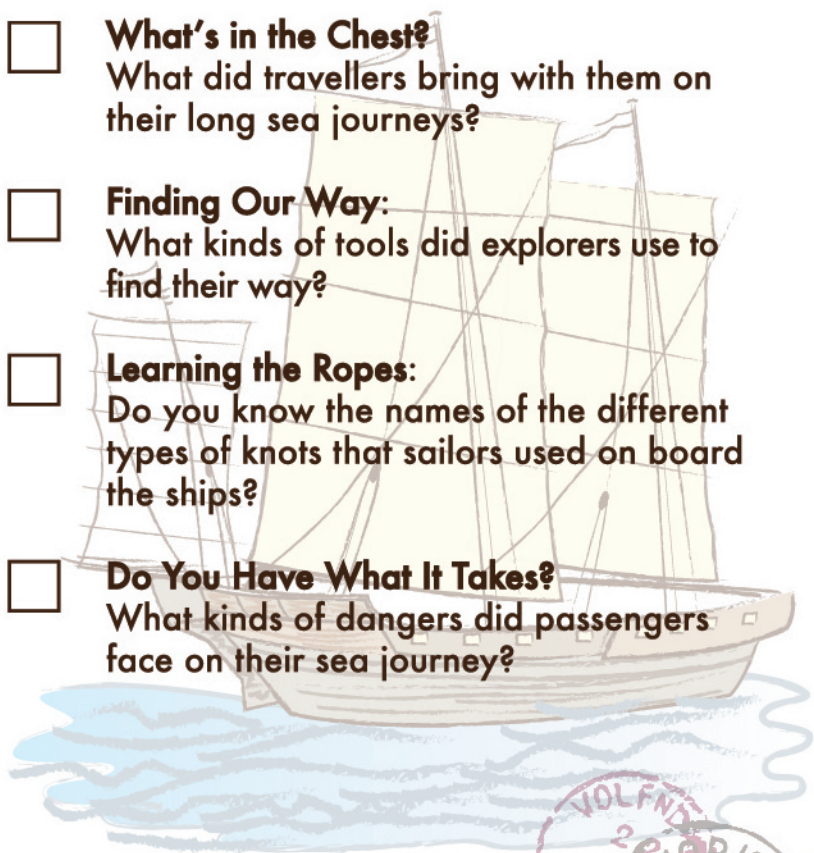
You are here!



ZONE 2: COME ON BOARD THE SHIP!

BOARDING PASS

- ☐ **What's in the Chest?**
What did travellers bring with them on their long sea journeys?
- ☐ **Finding Our Way:**
What kinds of tools did explorers use to find their way?
- ☐ **Learning the Ropes:**
Do you know the names of the different types of knots that sailors used on board the ships?
- ☐ **Do You Have What It Takes?**
What kinds of dangers did passengers face on their sea journey?



You are here!



ZONE 2: WHOSE FLAGS ARE THESE?

Each ship uses a flag as a form of identification. You can find out which nation the ship belongs to by looking at their flag.



- Can you guess how many flags are on this chart?
- Can you count the number of flags with the colour red on them?
- What kinds of symbols can you spot on the flags?

You are here!



Artefact credit: Matthaus Seutter's Flag Chart of the Seafaring Nations printed by Tobias Lotter, c1760
Collection of the National Museum of Singapore

ZONE 3: SIX SPICES, SIX SCENTS!

Many spices were found in the East Indies and traders travelled here to buy them. Sniff the scent boxes and guess the spices inside! What do they smell like? What are these spices used for?



You are here!



Scent box image
courtesy of GSM Project

ZONE 4: PLANTS AND ANIMALS

When the Europeans came to the East Indies, they were curious about the plants and animals they saw here. Do you recognise any of them?

- Can you name one of the world's strongest-smelling flowers?
- Can you spot a real animal specimen in the gallery? How would you describe its appearance?



Singapore's first British Resident, William Farquhar, commissioned artists from China to draw the flora and fauna he discovered in the region.

The Malayan tapir was one of the animals that he found. He even kept a young tapir as a pet!

You are here!



ZONE 4: CAN YOU FIND THE CURE?

Find out what kind of plants people in the past used to treat illnesses!



What do you
do when you
fall sick?



You are here!



Images courtesy
of GSM Project

ZONE 5: LAND AND PEOPLE

Many Europeans sketched or painted the things they saw in the East Indies, as the people here dressed and lived differently from them.

- Can you describe the clothes that the people here wore? How are they similar or different from the clothes you wear today?
- What do you think their houses were made of? What are your houses made of?



ZONE 6: ARRIVING IN SINGAPORE!

In the year 1819, William Farquhar, Stamford Raffles and their crew sailed to Singapore to set up a trading port. Can you spot their portraits in the exhibition?



Although Singapore was a new world to them, we now know that there was trade taking place here even before 1819!

You are here!



CONGRATULATIONS!

You've completed your exploration!
We hope that you've enjoyed the journey. What did you like most about the exhibition? Return these trail cards at the rack before you exit the gallery, and share your thoughts at the reflection station outside!



All information is correct at time of print. The National Museum of Singapore reserves the right to make changes and modifications to the exhibition without prior notice. Materials in this resource may not be reproduced in part or in whole without written consent from the Museum. © 2019 National Museum of Singapore.