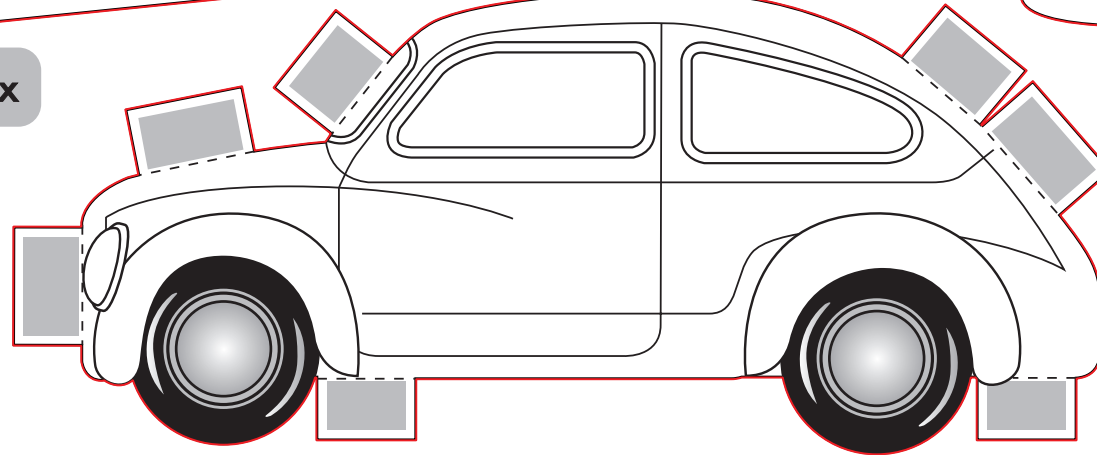


## Crafty Fun! Toy Car & Matchbox

Step 1: Add your favourite colours to the Toy Car and Matchbox.

Step 2: Cut out the Toy Car and Matchbox carefully. You can ask Mummy or Daddy to help you!

Step 3: Fold along all the dotted lines. Form the toy car and matchbox by using double-sided tape or glue on the grey boxes.

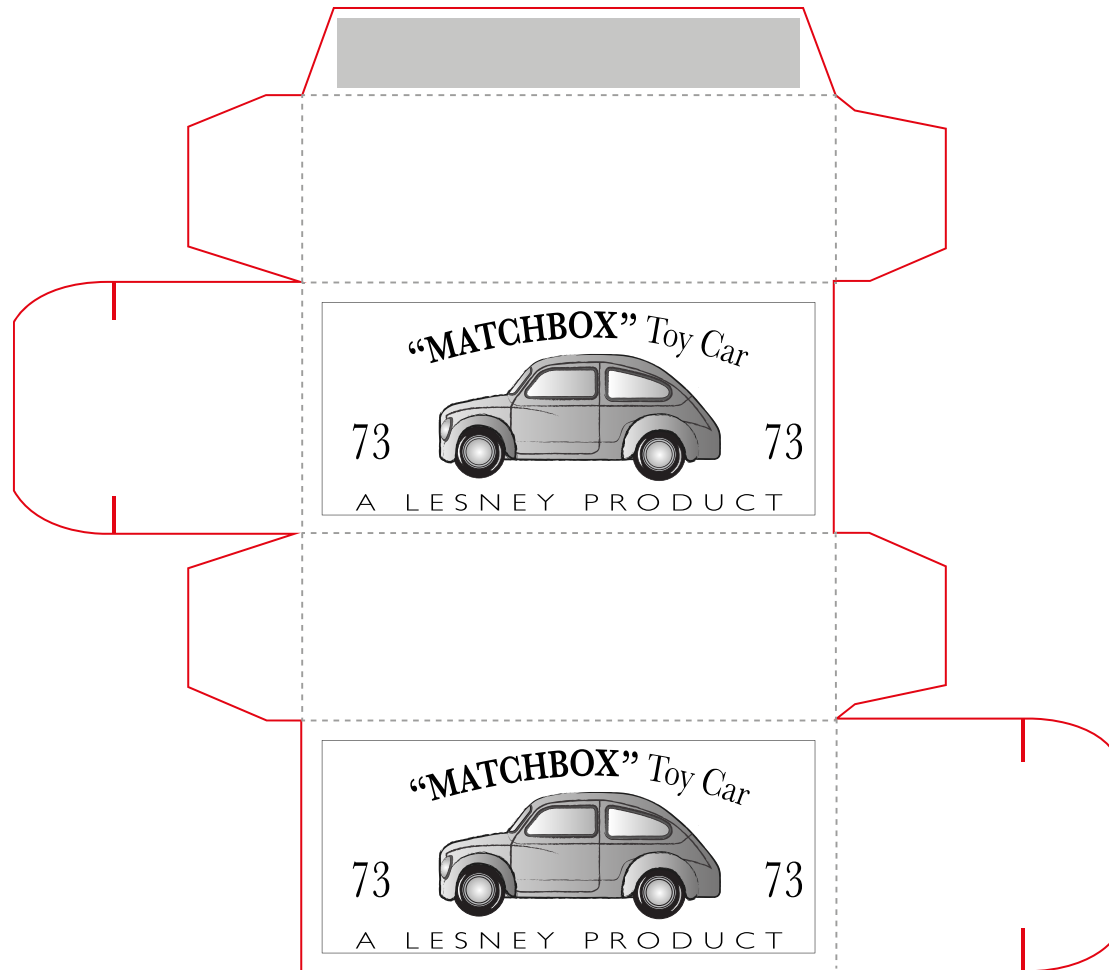


Where would you go in your little motor car?

## Crafty Fun! Toy Car & Matchbox

In 1896, the motor car was introduced to Singapore and gradually replaced the horse and carriage by the 1930s. Cars soon began to feature in children's toys, such as the Matchbox series of miniature vehicles that was introduced in 1953.

The matchbox on this page is the same size as the Matchbox series. While your toy car won't be able to fit into the matchbox, do visit our Growing Up gallery on Level 2 to see an actual Matchbox toy car and other old-school toys!



**Here's a challenge for you!**  
**Can you create a paper car that can fit into this matchbox?**

This Toy Car & Matchbox printable craft template is brought to you by the National Museum of Singapore.  
Presented as part of **#MuseumfromHome: Get Curious!**, 2020 | Illustrated by Joanne Lio