

N S M  
National Museum  
of Singapore

Our Spaces





## Our Spaces

Plan your next event or workshop at the National Museum! From our classy Glass Atrium to our state-of-the-art Gallery Theatre, there is a space for every occasion.

### **BASEMENT**

Gallery Theatre  
Gallery Theatre Foyer  
The Canyon

### **LEVEL 1**

The Salon  
The Courtyard and Terrace  
The Concourse  
Gallery10

### **LEVEL 2**

Glass Atrium  
The Platform  
Seminar Room

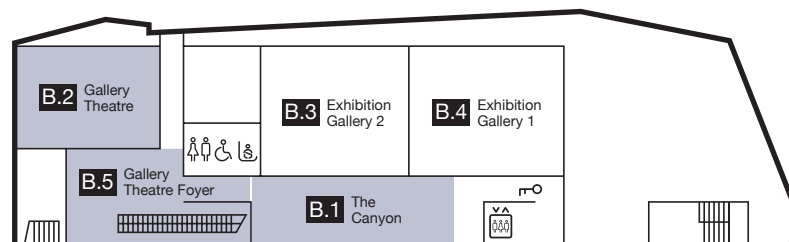
### **LEVEL 3**

Activity Space

**Please email [nms\\_bd@nhb.gov.sg](mailto:nms_bd@nhb.gov.sg) for enquiries.**

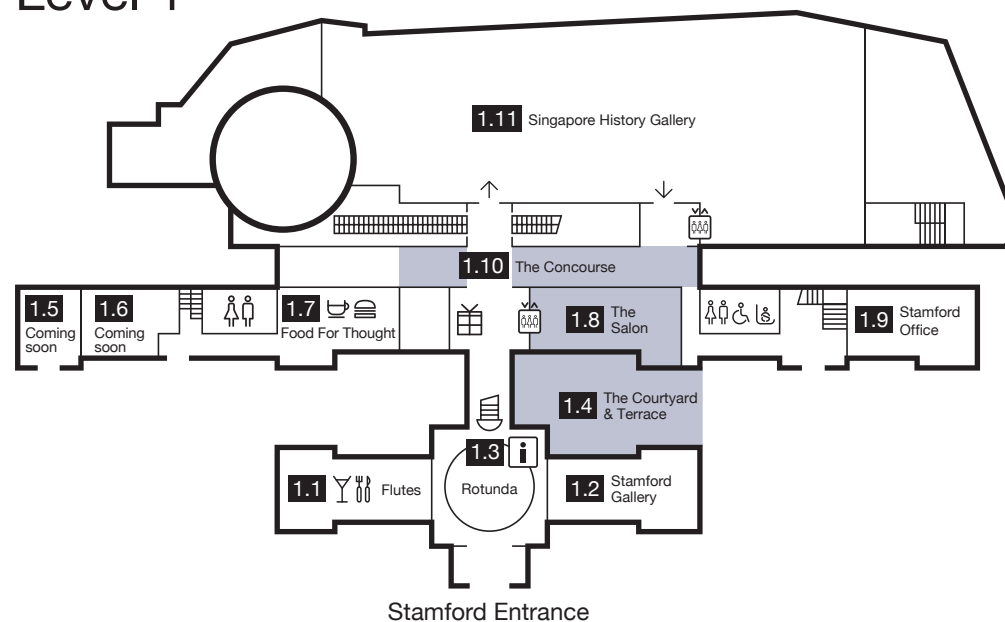
Enjoy further discounts when you book multiple event venues on the same day.

## Basement



- B.1** The Canyon
- B.2** Gallery Theatre
- B.3** Exhibition Gallery 2
- B.4** Exhibition Gallery 1
- B.5** Gallery Theatre Foyer

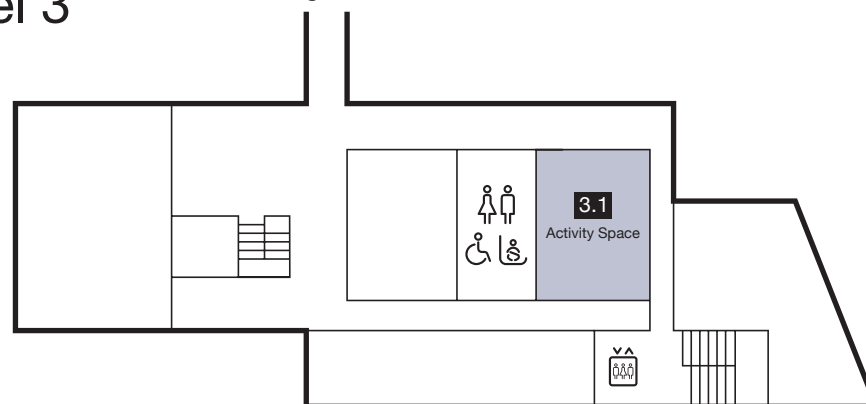
## Level 1



- 1.1** Flutes
- 1.2** Stamford Gallery
- 1.3** Visitor Services
- 1.4** The Courtyard & Terrace
- 1.5** Coming Soon
- 1.6** Coming Soon
- 1.7** Food For Thought
- 1.8** The Salon
- 1.9** Stamford Office
- 1.10** The Concourse
- 1.11** Singapore History Gallery

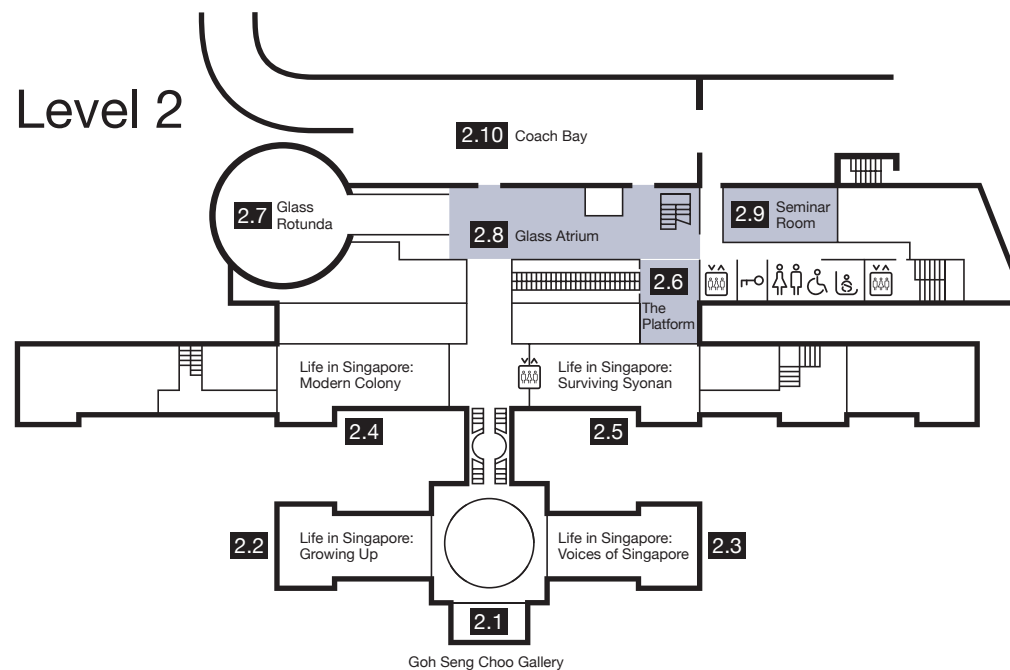
## Level 3

Canning Entrance



**3.1** Activity Space

## Level 2



**2.1** Goh Seng Choo Gallery

**2.2** Life in Singapore:  
Growing Up

**2.3** Life in Singapore:  
Voices of Singapore

**2.4** Life in Singapore:  
Modern Colony

**2.5** Life in Singapore:  
Surviving Syonan

**2.6** The Platform

**2.7** Glass Rotunda

**2.8** Glass Atrium

**2.9** Seminar Room

**2.10** Coach Bay



Visitor Services



Gift Shop



Restaurant



Cafe



Lift



Restrooms

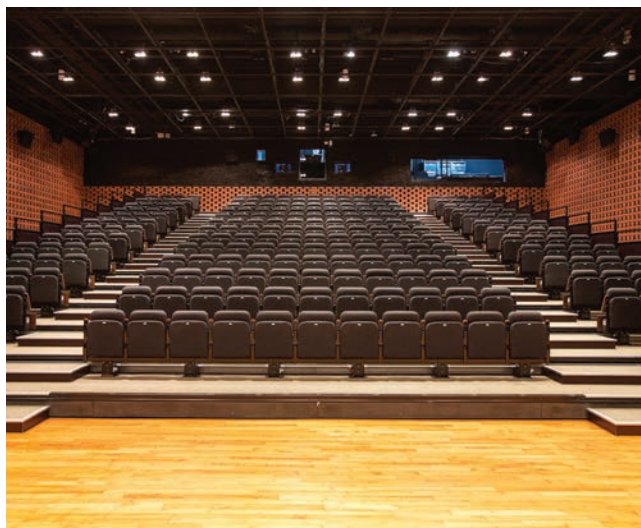


Baby Changing Room



Locker





# Gallery Theatre

## VENUE INFO

- Floor area – 350 sqm
- Auditorium seating capacity – 247 pax

## SUITABLE FOR

- Symposiums, panel discussions, film screenings and theatre performance

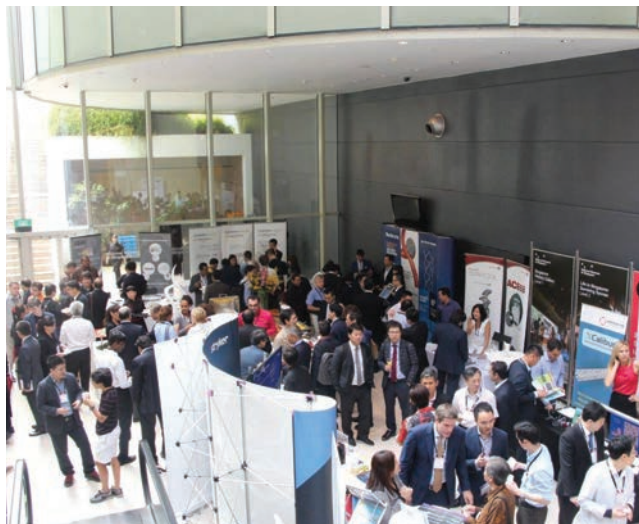
## EQUIPMENT

- Please request for technical book for professional film screenings and theatre performances
- Blu ray discs, digital betacam tapes
- DCP compatible
- DLP projector
- DVD/CD player
- 6 wireless mics
- 1 rostrum
- 6 tables, 4 ft/1.8m (L) x 2 ft/0.6m (W)

## RATES

- \$3,600 for a minimum block of 6 hours, \$480 for every subsequent hour
- Booking hours are to include move in, set up, AV testing and move out/teardown timing
- Food and drinks are not allowed in the theatre

\* Detailed floor plan available upon request



## Gallery Theatre Foyer

### VENUE INFO

- Floor area – 200 sqm
- Catering Set Up – 200 pax

### SUITABLE FOR

- Catering, Cocktail and Extension of event space at Gallery Theatre

### EQUIPMENT

- All equipment and set ups are to be provided by events and catering company

### RATES

- \$3,000 for a minimum block of 6 hours, \$400 for every subsequent hour
- Booking hours are to include move in/set up and move out/teardown timing
- Heavy setup such as stage, sound and light trusses can only be set up 1 night prior to event after 7pm when the galleries are closed
- A walkway of space of 1.5m has to be made available for public visitors for events taking place before 7pm
- A discount of 50% applicable when booked together with the Gallery Theatre

\* Detailed floor plan available upon request





## The Canyon

### VENUE INFO

- Floor area – 140 sqm
- Catering Set Up – 80 pax

### SUITABLE FOR

- Catering, Cocktail and Extension of event space at Gallery Theatre

### EQUIPMENT

- All equipment and set ups are to be provided by events and catering company

### RATES

- \$2,500 for a minimum block of 6 hours, \$340 for every subsequent hour
- Booking hours are to include move in/set up and move out/teardown timing
- Heavy setup such as stage, sound and light trusses can only be set up 1 night prior to event after 7pm when the galleries are closed
- A walkway of space of 1.5m has to be made available for public visitors for events taking place before 7pm.
- A discount of 50% applicable when booked together with the Gallery Theatre

\* Detailed floor plan available upon request



## The Salon

### VENUE INFO

- Floor area – 200 sqm
- Auditorium seating capacity – 120 pax
- Cocktail setting – 120 pax
- Sit down dinner – 80 pax

### SUITABLE FOR

- Corporate talks and seminars, award ceremonies, symposiums and recitals

### EQUIPMENT

- Sound mixer
- Stereo speakers and sub-woofer
- 4 wireless mics
- Rostrum
- VGA and HDMI Input (one on stage and the other at sound control)
- CD Player
- DLP projector and screen, 11.8ft/3.6m(L) x 11.8ft/ 3.6m(W)
- 120 standard chairs
- 6 rectangular tables, 6ft/1.8m (L) x 2.5ft/0.75m(W)

### RATES

- \$3,000 for a minimum block of 6 hours, \$400 for every subsequent hour
- Booking hours are to include move in, set up, AV testing and move out/teardown timing

\* Detailed floor plan available upon request





## The Courtyard and Terrace

### VENUE INFO

- Floor area – 220 sqm (Courtyard: 140 sqm and Terrace: 80 sqm)
- Cocktail setting – 150 pax
- Sit down dinner – 80 pax

### SUITABLE FOR

- Corporate dinners and events, extension of event and catering space for The Salon

### EQUIPMENT

- All equipment and set ups are to be provided by events company

### RATES

- \$3,000 for a minimum block of 6 hours, \$400 for every subsequent hour
- Booking hours are to include move in, set up, AV testing and move out/teardown timing
- A discount of 50% applicable when booked together with the Salon

\* Detailed floor plan available upon request



## The Longer Concourse

### VENUE INFO

- Floor area – 120 sqm
- Cocktail setting – 80 pax

### SUITABLE FOR

- Corporate cocktails and events, extension of event and catering space for The Salon

### EQUIPMENT

- All equipment and set ups are to be provided by events company and caterers

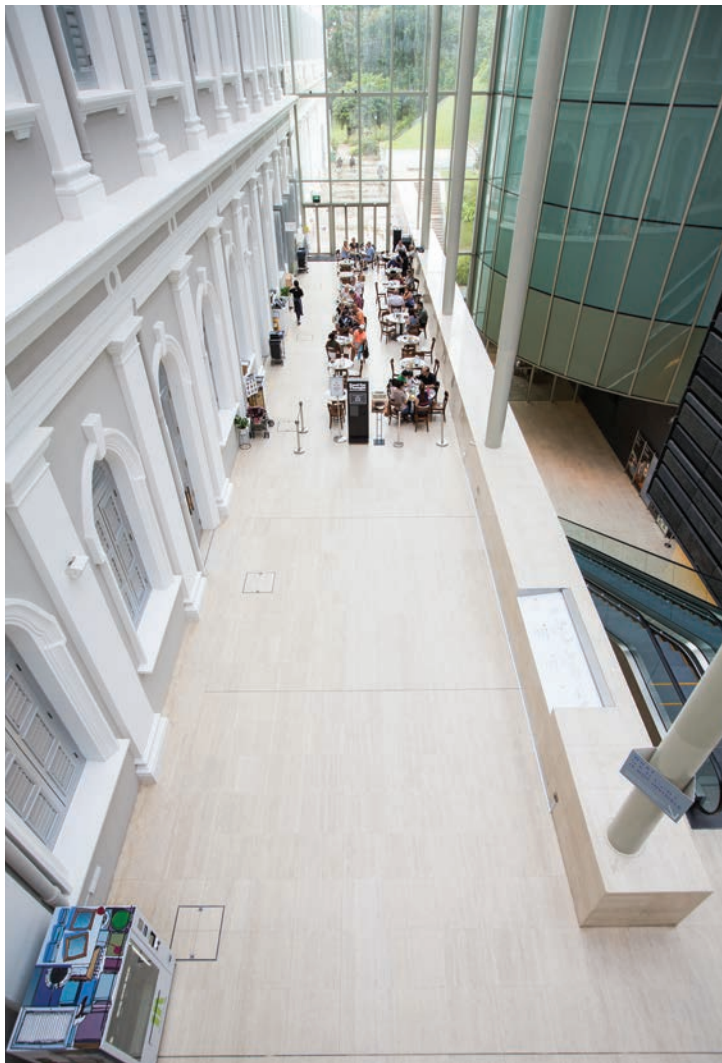
### RATES

- \$6,000 for a minimum block of 6 hours, \$800 for every subsequent hour
- Booking hours are to include move in, set up, AV testing and move out/teardown timing
- A walkway of space of 1.5m has to be made available for public visitors for events taking place before 7pm

\* Detailed floor plan available upon request







## The Shorter Concourse

### VENUE INFO

- Floor area – 60 sqm
- Cocktail setting – 40 pax

### SUITABLE FOR

- Corporate cocktails and events, extension of event and catering space for The Salon

### EQUIPMENT

- All equipment and set ups are to be provided by events company and caterers

### RATES

- \$3,600 for a minimum block of 6 hours, \$480 for every subsequent hour
- Booking hours are to include move in, set up, AV testing and move out/teardown timing
- A walkway of space of 1.5m has to be made available for public visitors for events taking place before 7pm
- A discount of 50% is applicable when booked together with The Longer Concourse

\* Detailed floor plan for available upon request





## Gallery10

### VENUE INFO

- Floor area – 160 sqm
- Cocktail setting – 80 pax
- Dinner setting – 50 pax
- Theatre setting – 50 pax

### SUITABLE FOR

- Corporate cocktails, dinners, seminars and product launches

### EQUIPMENT

- 25 sets of lighting mode
- 4 build in speakers
- 2 wireless mics
- 1 ceiling mounted projector, aspect ratio of 4:3 and screen size of 8ft/2.43m (W) x 6 ft/1.87m (H)
- 1 mini audio jack for background music
- 6 tables, 6ft/1.8m (L) x 2.5ft/0.75m (W)
- 50 ghost chairs
- Additional 3 ceiling mounted projector and 4 LCD TVs
- Additional third party fees may be incurred for use of specialised equipment, subject to rental requirements

### RATES

- \$3,000 for a minimum block of 6 hours, \$400 for every subsequent hour
- Booking hours are to include move in, set up, AV testing and move out/teardown timing

\* Detailed floor plan available upon request



## Glass Atrium

### VENUE INFO

- Floor area – 450 sqm
- Cocktail setting – 250 pax
- Sit down dinner – 100 to 150 pax

### SUITABLE FOR

- Corporate dinners and events

### EQUIPMENT

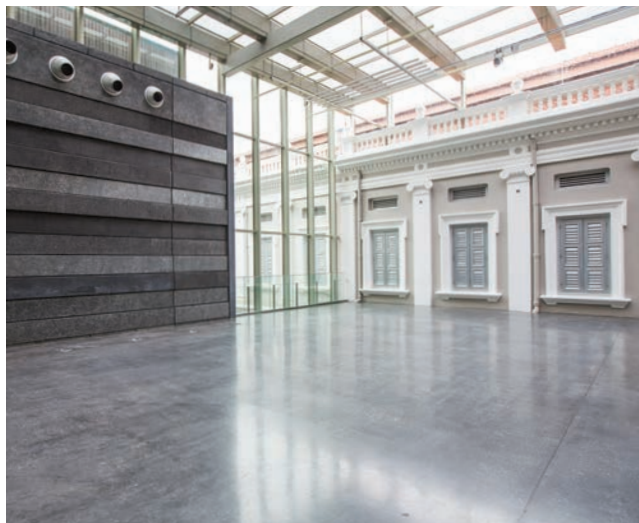
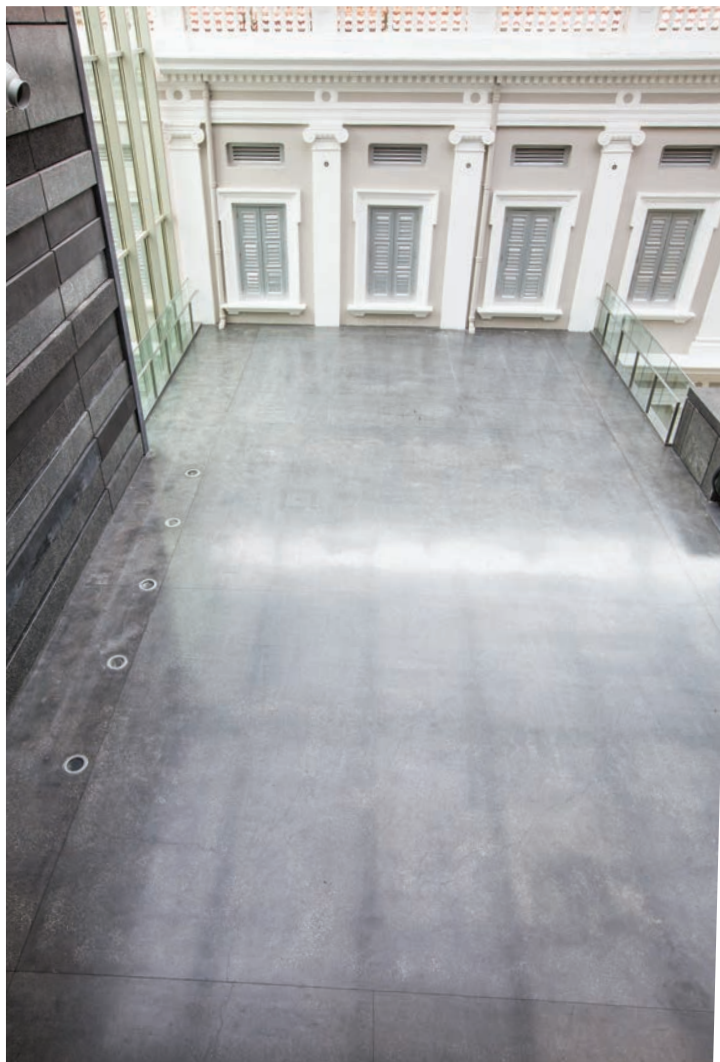
- All equipment and set ups are to be provided by events company

### RATES

- \$6,000 for a minimum block of 6 hours, \$800 for every subsequent hour
- Booking hours are to include move in, set up, AV testing and move out/teardown timing
- Heavy setup such as stage, sound and light trusses can only be set up 1 night prior to event after 7pm when the galleries are closed
- Venue is only available for evening event after 7pm

\* Detailed floor available upon request





## The Platform

### VENUE INFO

- Floor area – 140 sqm
- Cocktail setting – 80 pax

### SUITABLE FOR

- Cocktail events and extension of event space at glass atrium

### EQUIPMENT

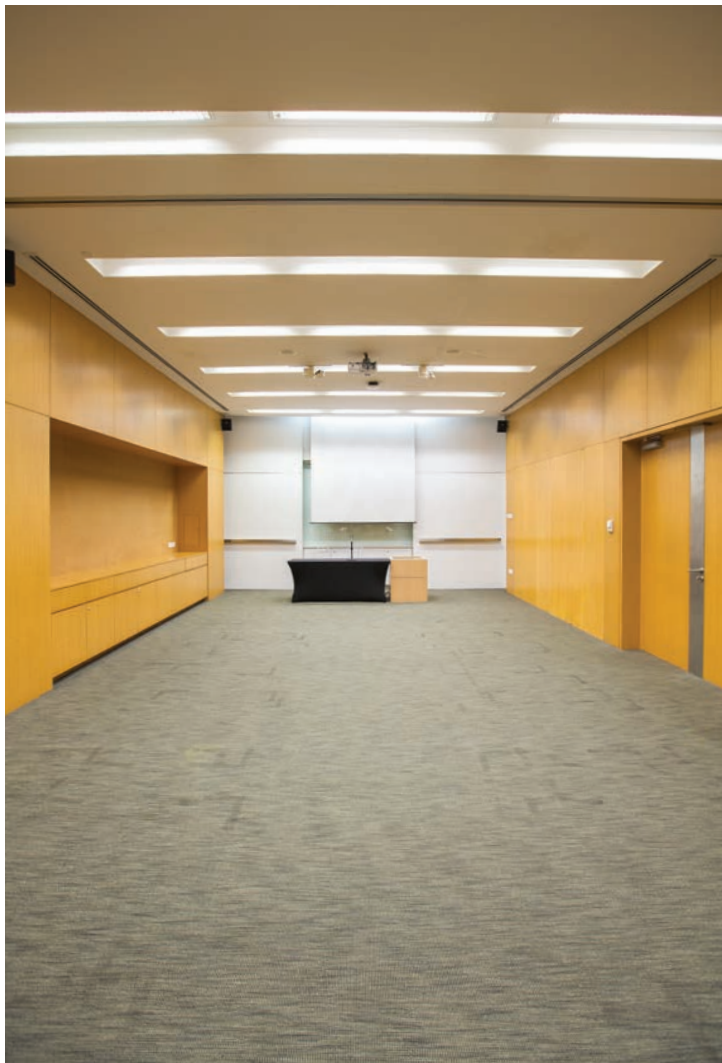
- All equipment and set ups are to be provided by events company

### RATES

- \$3,000 for a minimum block of 6 hours, \$400 for every subsequent hour
- Booking hours are to include move in, set up, AV testing and move out/teardown timing
- Heavy setup such as stage, sound and light trusses can only be set up 1 night prior to event after 7pm when the galleries are closed
- Venue is only available for evening event after 7pm
- A discount of 50% is applicable when booked together with the Glass Atrium

\* Detailed floor plan available upon request





## Seminar Room

### VENUE INFO

- Floor area – 120 sqm
- Auditorium seating capacity – 70 pax
- Workshop seating capacity – 40 pax

### SUITABLE FOR

- Seminars, workshops and work plan retreats

### EQUIPMENT

- Sound mixer
- Stereo speakers
- 2 wired mics
- 1 wireless mic
- VGA Input
- DLP Projector and Screen
- 70 standard chairs
- 6 rectangular tables, 4ft/1.2m (L) x 2ft/0.6m(W)
- 5 flip chart boards

### RATES

- \$1,200 for a minimum block of 6 hours, \$160 for every subsequent hour
- Booking hours are to include move in, set up, AV testing and move out/teardown timing
- Food and drinks are not allowed in the room, catering can be done along seminar room corridor

\* Detailed floor plan available upon request



## Activity Space

### VENUE INFO

- Floor area – 120 sqm
- Auditorium seating capacity – 40 pax
- Workshop seating capacity – 40 pax

### SUITABLE FOR

- Seminars, workshops and work plan retreats

### EQUIPMENT

- Portable projector
- Portable sound speakers
- 2 wireless mics
- 40 chairs
- 6 rectangular tables, 6ft/1.8m (L) x 2.5ft/0.75m(W)
- 5 flip chart boards

### RATES

- \$2,400 for a minimum block of 6 hours, \$320 for every subsequent hour
- Booking hours are to include move in, set up, AV testing and move out/teardown timing
- Food and drinks are not allowed in the room, catering can be done along corridor

\* Detailed floor plan available upon request





## About the National Museum of Singapore

With a history dating back to 1887, the National Museum of Singapore is the nation's oldest museum with a progressive mind. It redefines the conventional museum experience by exploring multiple perspectives of history and cutting-edge presentations. A cultural and architectural landmark in Singapore, the museum hosts innovative festivals and events—the dynamic Singapore Heritage Festival and Singapore Night Festival—as well as art installations, performances and film screenings all year round, in addition to presenting thought-provoking exhibitions that feature important artefact collections. The programming is supported by a wide range of facilities and services including F&B, retail and a Resource Centre.

The National Museum of Singapore re-opened in December 2006 after a three-year redevelopment, and celebrated its 125th anniversary in 2012. The museum's permanent galleries were revamped and re-opened in September 2015. Refreshed with updated stories and content on Singapore's history, the galleries recapture the nation's defining moments, challenges and achievements from its earliest beginnings 700 years ago to the independent, modern city-state it is today.

Come experience the National Museum and take another look at Singapore's history.



