

LEGEND

Visitor Services

Guided Tour Meeting Point

Access-friendly Points

AED

Emergency ExitCafeGift ShopBaby Changing Room

**All galleries are high sensory areas, with more people, multimedia, loud sounds and/or dim lighting.*

LEVEL 1

LEVEL 1

Singapore History Gallery

Glass Rotunda

The Concourse

Café Brera at Reunion

Reunion Social Space

Food For Thought

Shop

Digital Display: Moving Memories 2

The Salon

Stamford Office

Rotunda

Stamford Gallery

Museum Entrance Drop-off Point (Stair Access)

National Museum Historic Trail

Markers supported by LGT Private Banking

LEVEL 2

LEVEL 2

Story of the Forest, Singapore

Very Old Tree

Glass Rotunda

Glass Atrium

Seminar Rooms

Basement to L2

L1 & L2

National Museum Historic Trail

Markers supported by LGT Private Banking

BASEMENT

BASEMENT

Gallery Theatre

Now Boarding Exhibition
27 May 2023 to 25 February 2024

Basement to L2

National Museum Historic Trail

Markers supported by LGT Private Banking

LEVEL 3

LEVEL 3

Canning Entrance (Stair Access)

Get Curious Children's Studio

Activity Space

L2 & L3

National Museum Historic Trail

Markers supported by LGT Private Banking

MUSEUM ETIQUETTE

The well-being of our visitors and staff remains our primary concern. To provide a pleasant experience for all and to protect our national collection, please observe the following:

-
- No food and drinks

All information is correct at time of print. All rights reserved. Materials in this publication may not be produced in part or in whole without written consent of the National Museum of Singapore, the publisher. © Copyright 2023.

Dome Bot for More

Use Dome Bot to enhance your experience when visiting the museum! Access audio tours and exhibition content in English, Mandarin, Malay and Tamil, audio-video clips, other interactives and more using your mobile phone. Simply scan the QR code to start your journey.

Get Started

Venue Rental & Event Spaces

Host your next event at National Museum of Singapore. The historic building makes for a beautiful and unforgettable event venue. For rental enquiries, please email us at nms_bd@nhb.gov.sg.

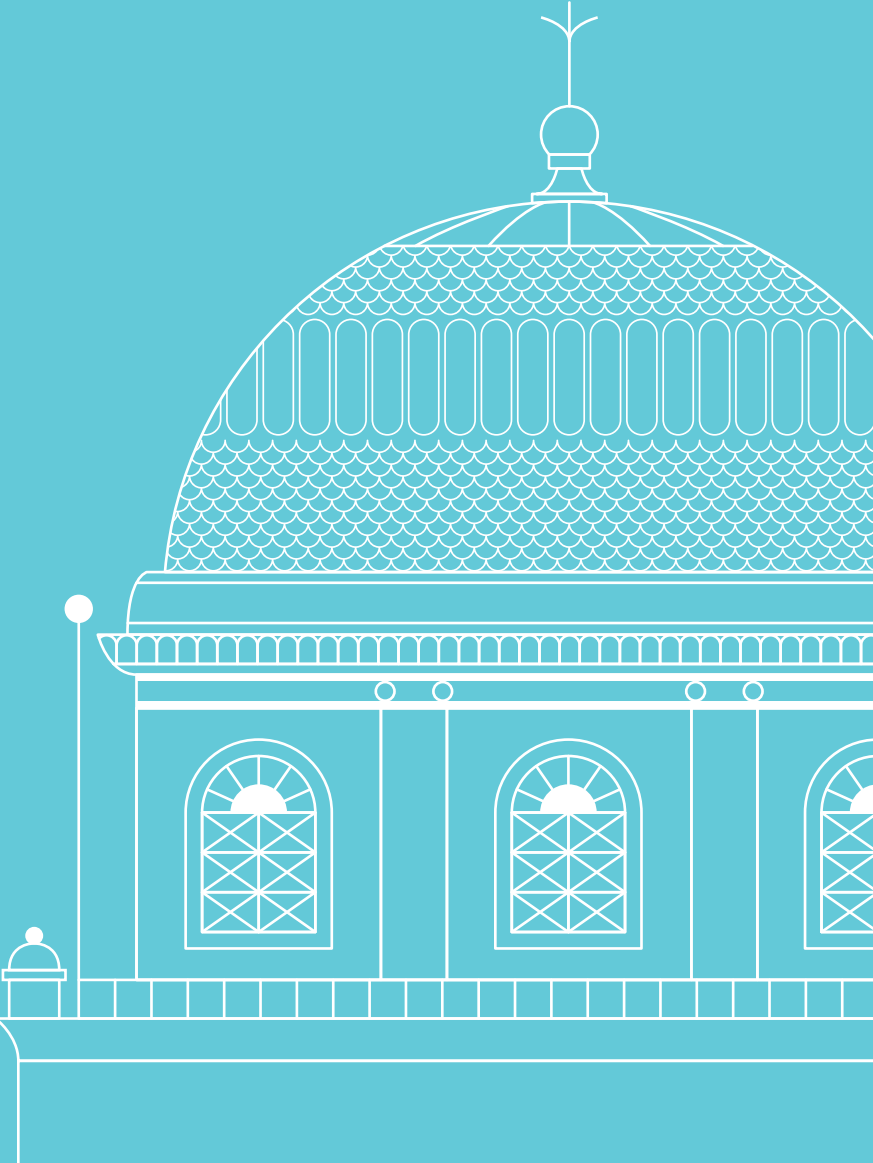
Giving Made Easy

Your donation helps the museum continue to inspire with stories of Singapore and the world, as well as make our spaces more engaging and accessible to people from all walks of life. You can donate via giving.sg by scanning the QR code on the left or donate directly from your mobile banking app by scanning the QR code at the bottom.

- Step 1** Log in to your bank's mobile banking app.
- Step 2** Scan PayNow QR code using your mobile banking app or enter UEN No: T08GB0036BNHF.
- Step 3** Enter your desired donation amount. Input "NMS" under the Reference Number field. Confirm the transfer.

FLOOR PLAN & GUIDE

N S M
National Museum
of Singapore



With a history dating back to 1887, the National Museum of Singapore is the nation's oldest museum with a progressive mind. Its galleries adopt multi-perspective ways of presenting history and culture featuring important artefacts that tell the stories of Singapore and the world to redefine the conventional museum experience.

The museum is home to thought-provoking exhibitions and hosts exciting events all year round including the Singapore Night Festival.

Come experience the National Museum and take another look at Singapore's history.

Museum Hours:

10am to 7pm (Daily)

Last Admission:

6.15pm (Glass Rotunda)
6.30pm (All other permanent galleries)

Contact:

 national.museum.of.singapore

 natmuseum_sg

 natmuseum_sg

 nhb_nm_corpcomms@nhb.gov.sg

 nationalmuseum.sg

HIGHLIGHTS

Visit nationalmuseum.sg for the full list of exhibitions and programmes.

Basement, Exhibition Gallery 2

Now Boarding: Experiencing Singapore through Travel, 1800s - 2000s

27 May 2023 to 25 February 2024

Now Boarding is an exhibition which traces Singapore's identity through the medium of travel, examining the ways in which Singapore has been depicted and perceived by travellers who have arrived at our shores from past to present.

Inspired by a travel guidebook, artefacts from the National Museum's rich collection are presented through four key chapters, which we invite you to delve into to reflect upon how Singapore is imagined and experienced by both locals and foreigners.



Level 1

Reunion Social Space

Reunion is the first purpose-built dedicated social space for seniors in a local museum. Seniors, including those living with mild cognitive impairment and dementia, can now look forward to heritage-based programmes at Reunion, and having meaningful conversations and interaction using the museum's collection to support their health and well-being.



Level 2, Glass Rotunda

Story of the Forest

This larger-than-life interactive digital art installation is inspired by the museum's prized William Farquhar Collection of Natural History Drawings, and was created by internationally renowned Japanese art collective teamLab. It utilises cutting-edge technology to transform 69 drawings from the collection into animated illustrations, which come to life and interact with visitors as they make their way down the Glass Rotunda.



Level 1

Singapore History Gallery

The Singapore History Gallery's updated narrative charts the development of the island as it was known through the years as Singapura, a Crown Colony, Syonan-To, and finally, Singapore. This gallery chronicles Singapore's journey from our earliest beginnings 700 years ago to the colonial days, the Japanese Occupation and post-war struggles, and to the global city we enjoy today.

RETAIL AND DINING

Supermama, The Museum Store

Mon – Sun: 10am to 7pm
Tel: (65) 9615 7473
info@supermama.sg

Supermama is a Singaporean design and lifestyle goods brand. Founded in 2010, the store seeks to provide a museum-like respite to the busyness of urban life. What started off as a couple's endeavour to steal time away from work for their young children has evolved into Singapore's go-to for locally designed homeware and souvenirs.



Food For Thought

Mon – Sun: 10am – 6pm
Tel: (65) 6338 9887
nms@foodforthought.com.sg

A museum café filled with stories for the young and old alike, Food For Thought balances nostalgia with innovation in its restaurant design and food offerings.



Café Brera at Reunion

Mon – Sun: 9am – 5pm
Tel: (65) 8413 6360
order.brera@gmail.com

Café Brera at Reunion features authentic French Viennoiseries and European classic breads, alongside bakes and creations reflecting Singapore's heritage. Dysphagia-friendly food are also available for visitors with swallowing difficulties. At Café Brera, one may look forward to having a good conversation over delicious food made with fresh and wholesome ingredients!