



SINGAPORE PHILATELIC MUSEUM
YEAR IN REVIEW FY2020/2021



YEAR IN REVIEW FY 2020/2021

Singapore Philatelic Museum (SPM) has been closed for upgrading works since March 2019. Although the museum is closed, staff continue to engage students and members of the public through outreach activities.

Primary and secondary school students created beautiful works for the annual *Draw My Stamp Story Art Competition*, and pre-school and primary school students learnt about the interesting stories told through stamps at education programmes.

Members of the public enjoyed travelling exhibitions at libraries, and took part in a range of interesting online activities.

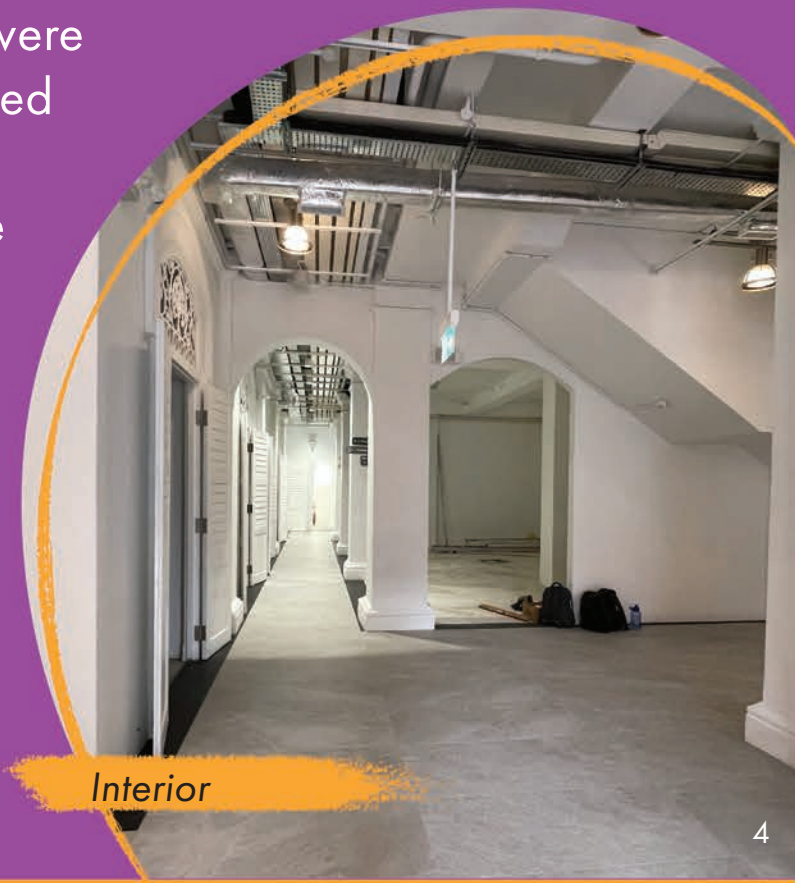
SPM will reopen as Singapore's first ever museum dedicated for children in 2022. A welcoming, imaginative and nurturing space that fosters learning among our young, it will explore a wide range of themes including heritage, culture and contemporary issues in permanent and changing exhibitions.

RENOVATION

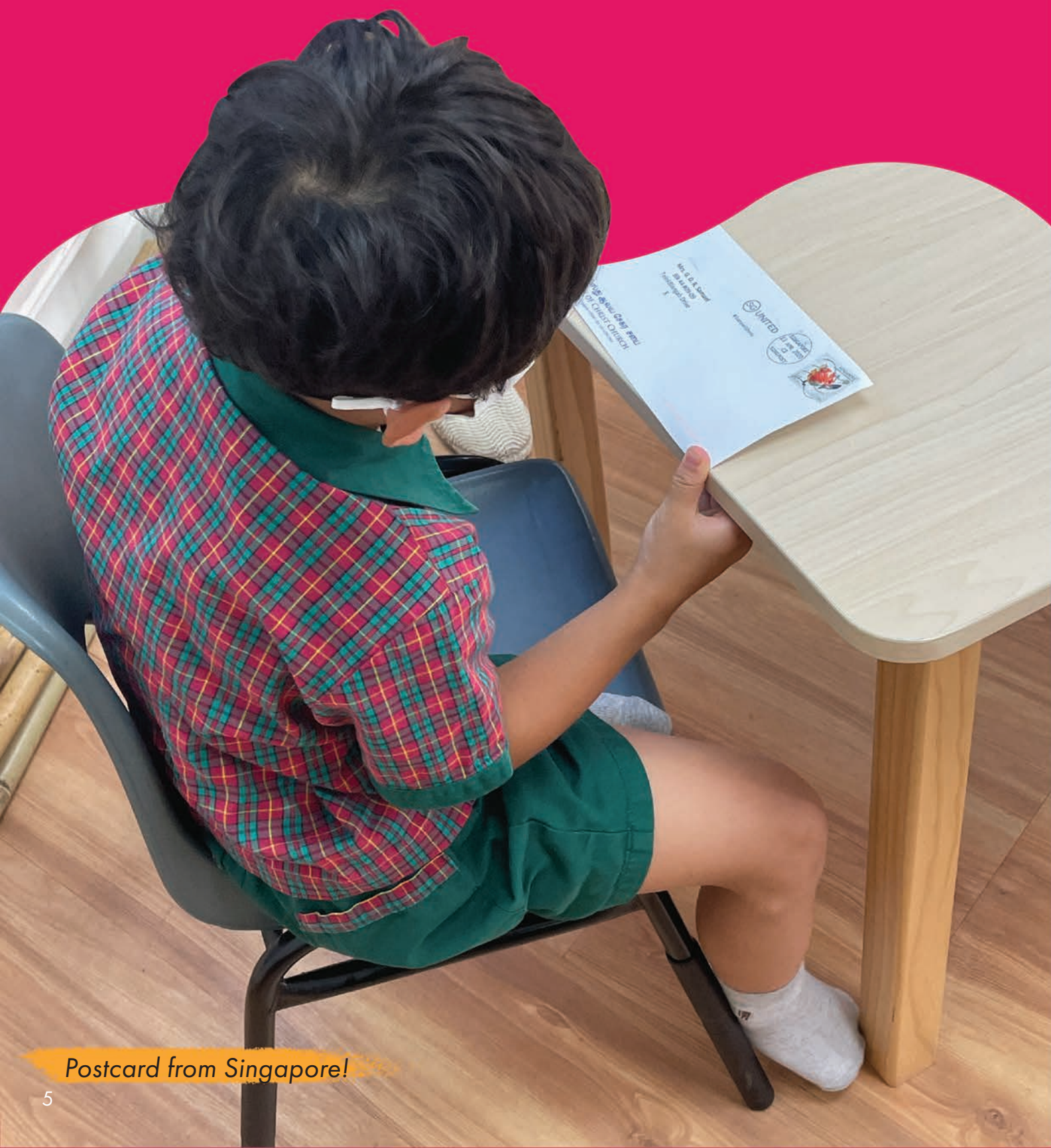


The museum renovation works were initially expected to be completed by June 2020. However, work had to be suspended due to the COVID-19 "circuit breaker".

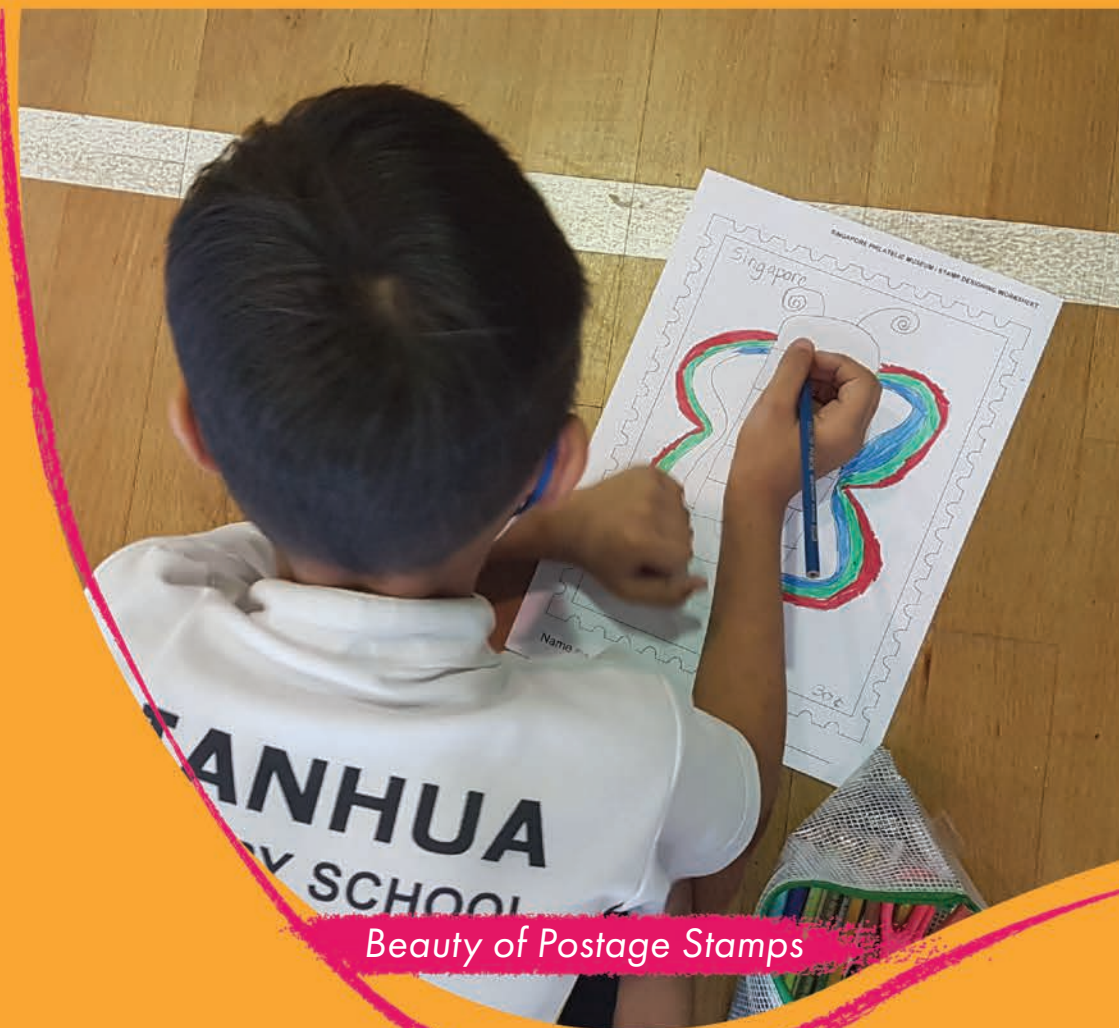
Temporary Occupation Permit (TOP) was granted in May 2021 and the gallery fit-out is likely to commence in the 4th quarter of 2021.



STAMPS AS EDUCATIONAL TOOLS



Postcard from Singapore!



Beauty of Postage Stamps

Stamps make great education tools as they are pictorial records of a country, telling stories of history, culture, festivals and more.

A total of 768 primary school students and teachers, and 219 children and teachers from pre-schools participated in a range of programmes. They learnt about the many themes and designs on stamps, stamps made of unusual and exotic materials, how to address a postcard and how to incorporate a stamp into their artwork.



Postcard from Singapore!

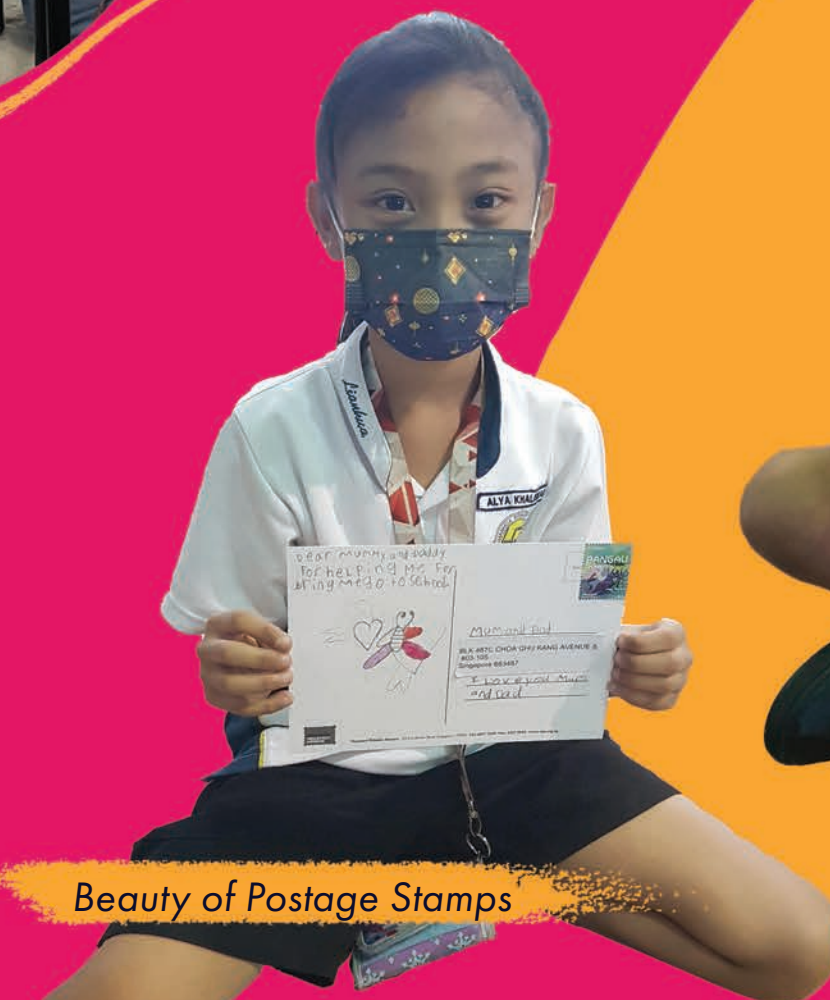


The Art of Postage Stamps

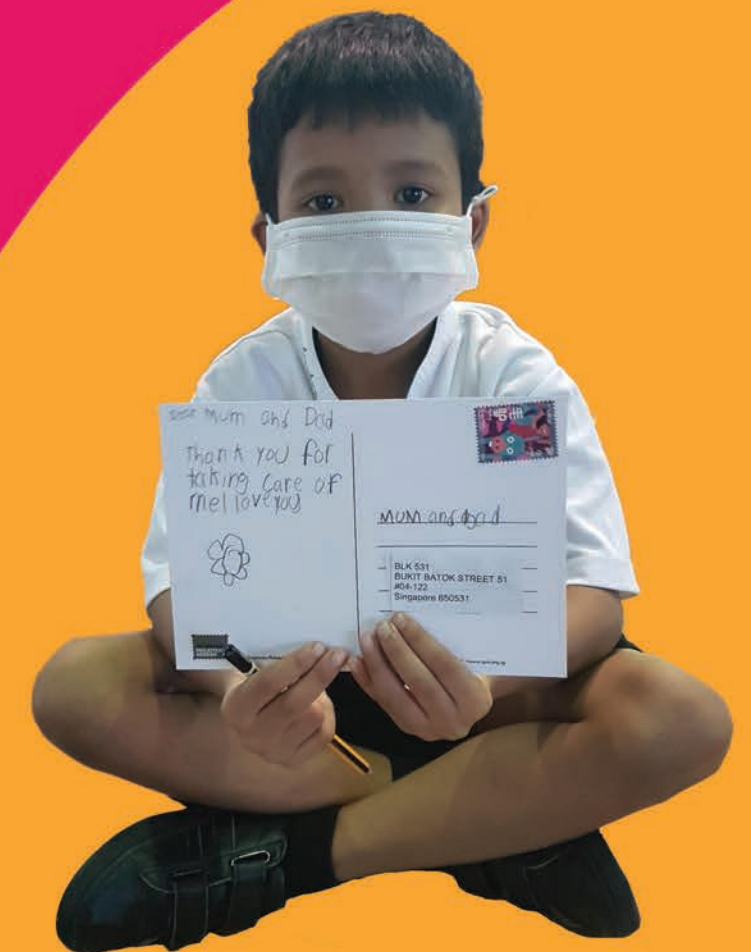
Popular programmes included *Beauty of Postage Stamps*, *Stamps that Tickle Our Senses*, *The Art of Postage Stamps* and *Postcard from Singapore!*



The Art of Postage Stamps



Beauty of Postage Stamps

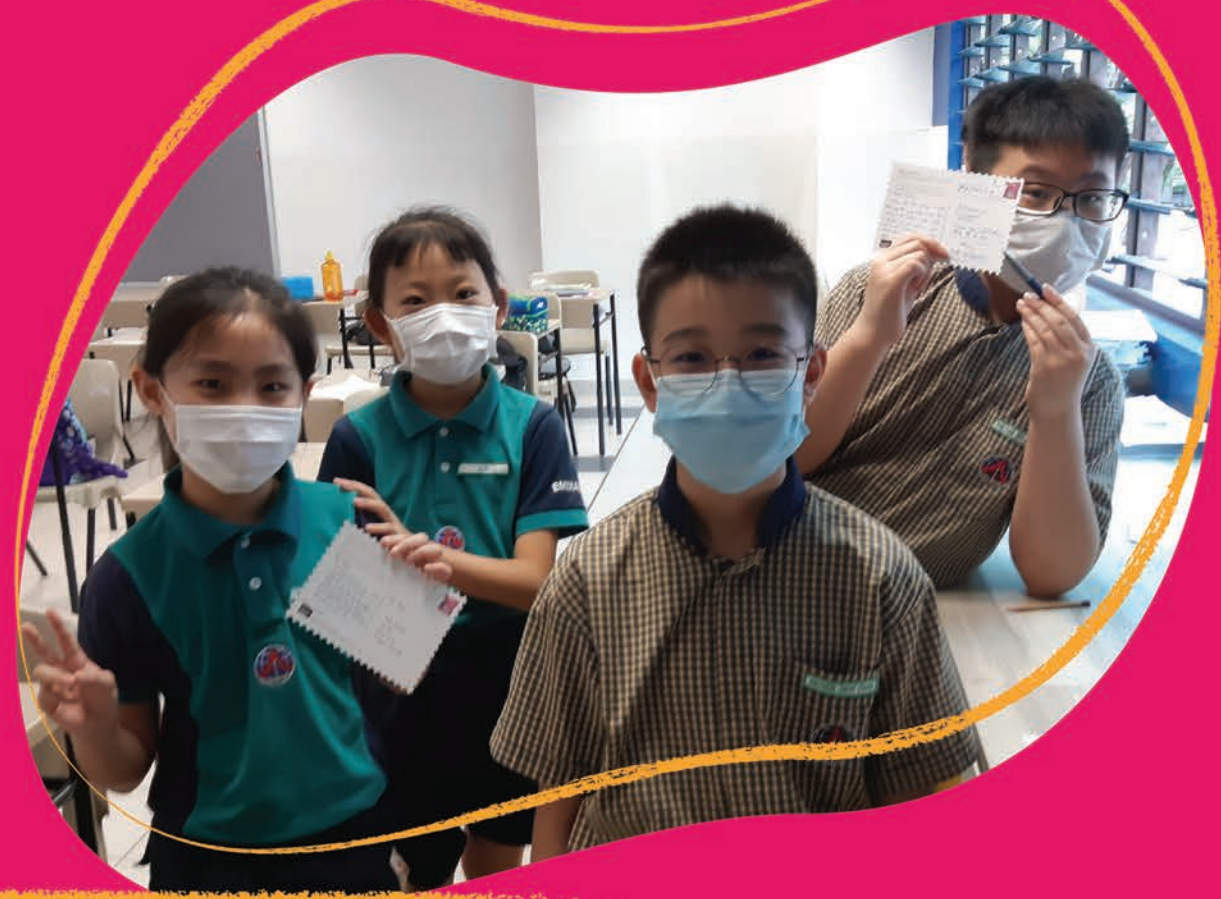


A postcard is a quick means of sending a message, with the address and stamp on one side and a picture on the other side. It can be somewhat compared with the SMS of the 19th century.

In conjunction with World Postcard Day commemorated on 1 October 2020, SPM sponsored postcards and stamps to 40 primary schools. The packages were snapped up quickly and 1,720 students and teachers experienced and mastered the art of postcard writing.



Sengkang Green Primary School students with their postcards

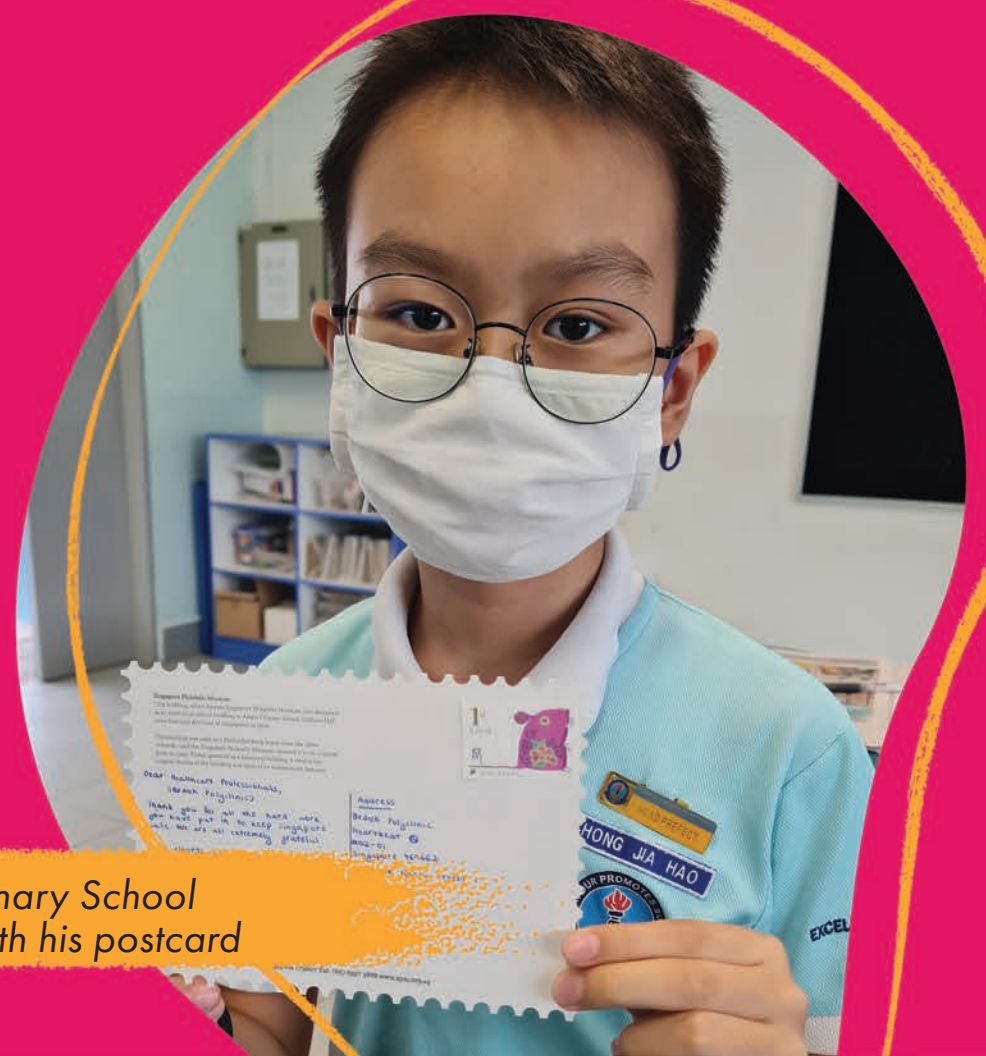


Anderson Primary School students with their postcards

Interesting and touching messages emerged from the postcard writing and included messages of students who appreciated the kindness and thoughtfulness of their parents, best friends thanking each other for their continued friendship, students encouraging their siblings to study hard for their exams and more.

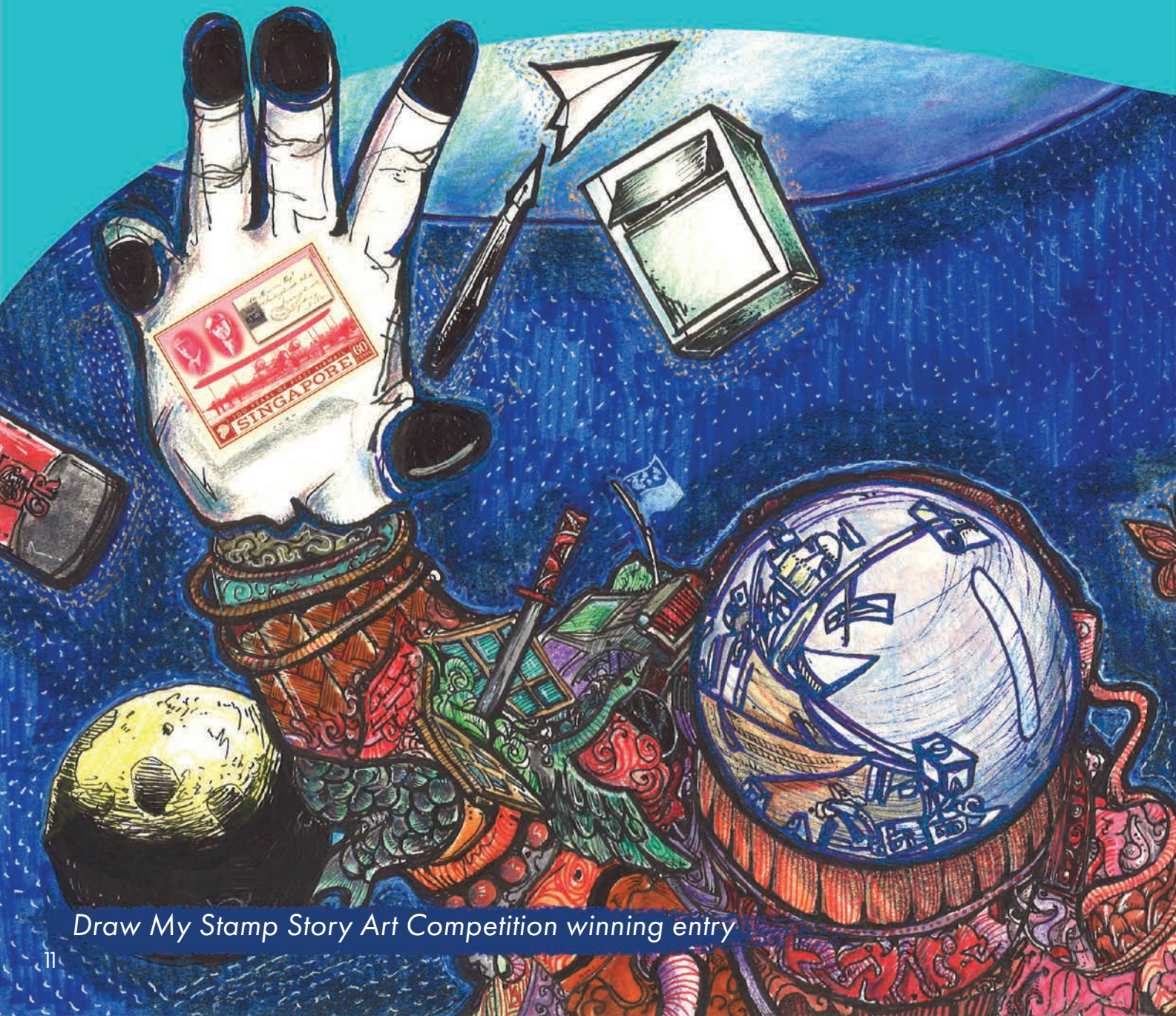


Postcards by students



Eunos Primary School student with his postcard

DRAW MY STAMP STORY ART COMPETITION



Draw My Stamp Story Art Competition winning entry



Draw My Stamp Story Art Competition winning entry

Draw My Stamp Story Art Competition is an annual competition for primary and secondary schools. Participants use drawings to tell a story and include stamp(s) elements in their work.

Many schools took part in the competition for the first time. A total of 5,530 entries were received which was almost double from the previous year. Out of these, more than 800 entries were shortlisted. Winning entries were featured on the SPM website.

BEYOND THE CLASSROOM



Outdoor Fun at Fort Canning Park



Grandma's Treasures

**ROUND OF
APPLAUSE!**

Well Done!



Grandma's Treasures Virtual Programme - YMCA Kuo Chuan Presbyterian

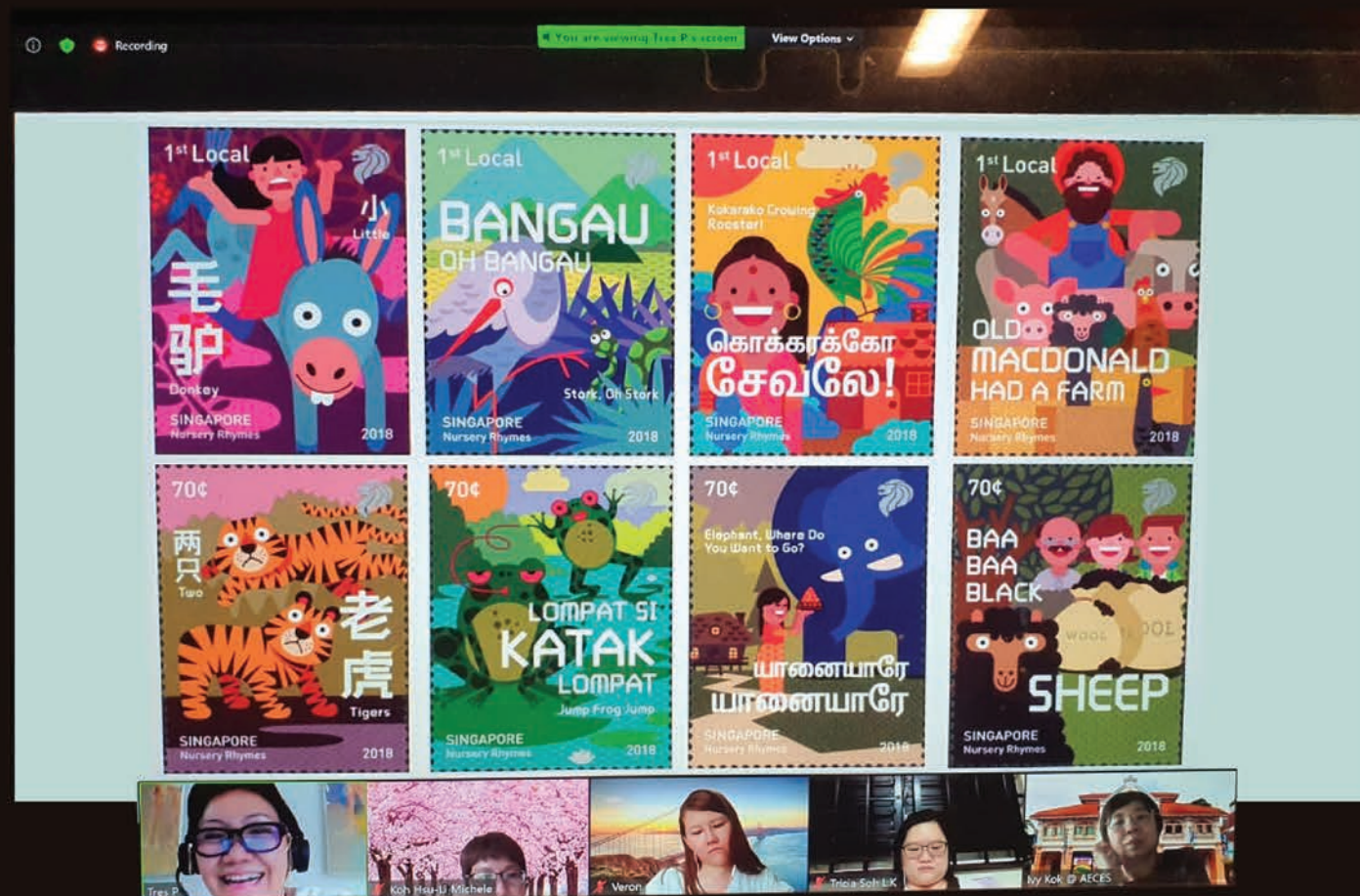
The COVID-19 "circuit breaker" changed the way how programmes were conducted, with some activities going online.

During the year-end school holidays and the school term, physical *Outdoor Fun at Fort Canning Park* and virtual programmes *Home Sweet Home* and *Secret Treasures* were conducted for 206 children. They enjoyed activities such as interactive storytelling, quizzes, craft and scavenger hunt.



Home Sweet Home Virtual Programme - Public Audience





Sharing during the Professional Development Programme for Leaders via Zoom

SHARING WITH EDUCATORS

SPM participated in the Early Childhood Development Agency (ECDA) Professional Development Programme for Leaders in November and December 2020. Director and General Manager of SPM shared with 111 early childhood educators on how stamps can be used as educational resources in the classroom.

The sessions were planned, coordinated and facilitated by the Association for Early Childhood Educators (Singapore) (AECES).

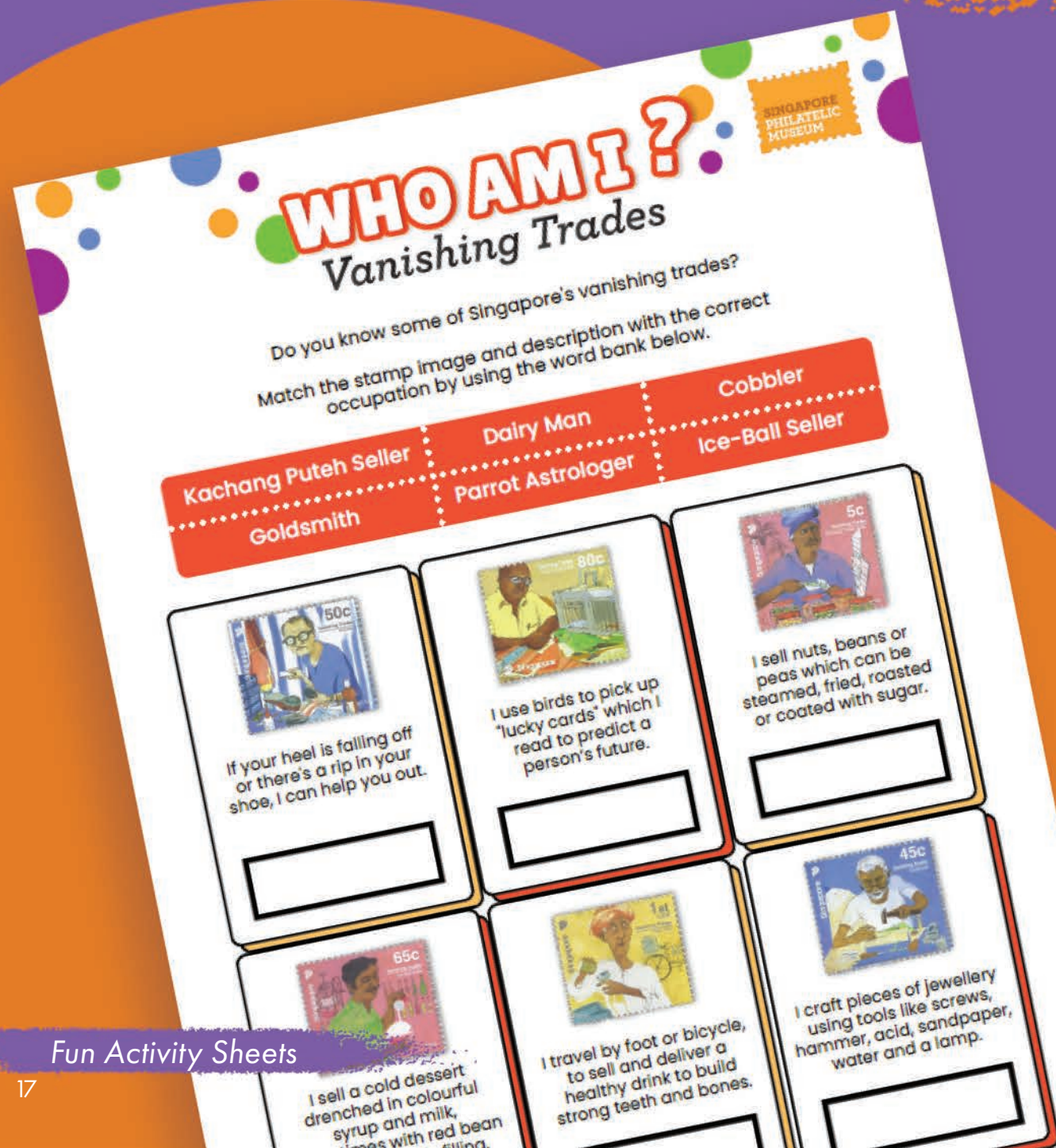
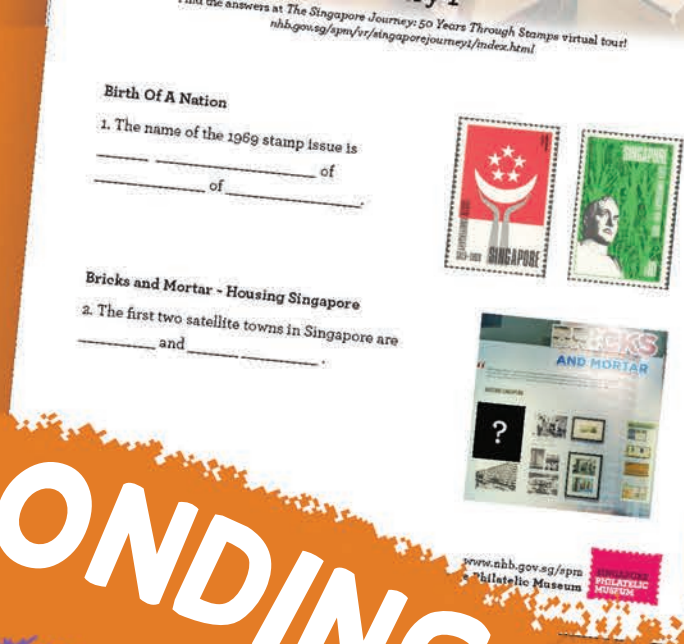
Through stamps and other philatelic materials, we aim to open young minds to a broad and fascinating world.



Singapore- Egypt Joint Issue – Singapore River (2011); Wetlands Wildlife – Smooth Otter (2000); Singapore – Sweden Joint Issue – Peacock Butterfly; Singapore National Monuments – Armenian Church (1978)

Sample Slide in Professional Development Programme for Leaders

FAMILY BONDING



Fun Activity Sheets

Fun Activity Sheets

In the spirit of family bonding during COVID-19, online activities which blended entertainment and education kept children occupied and active while at home. They were based on Singapore stamps and philatelic materials, and were available on the SPM website. Activities included jigsaw puzzles, spot the difference games, quizzes, colouring sheets and story jumbles.



WINDOWS TO THE WORLD



A Little Magic travelling exhibition



A Little Magic travelling exhibition

Families and children immersed themselves in a vast array of beautiful fairy-tale themed stamps from all over the world at A *Little Magic* travelling exhibition. They relived stories written by renowned writers like Hans Christian Andersen, The Brothers Grimm, Charles Perraut and more. The exhibition travelled to four libraries and attracted 30,582 visitors.



Seeing Is Believing – Every Stamp Tells A Story travelling exhibition attracted 321, 742 visitors in seven libraries, and at SingPost Centre.

Seeing Is Believing - Every Stamp Tells A Story travelling exhibition

Innovative stamp designs and printing technology have transformed the humble postage stamp to one that engages all our senses, like the world's first beaded stamp from Singapore and the chocolate-scented stamp from Belgium.



Seeing Is Believing - Every Stamp Tells A Story travelling exhibition

The logo is a white rectangle with a black scalloped border. Inside, the text "SINGAPORE PHILATELIC MUSEUM" is written in a bold, black, sans-serif font, stacked in three lines.

**SINGAPORE
PHILATELIC
MUSEUM**

23-B COLEMAN STREET, SINGAPORE 179807