

# The League Against Evil

A DC Super Heroes Exhibition

5 June 2014 – 30 November 2014



All related characters and elements are trademarks of and © DC Comics.  
WB SHIELD: TM & © Warner Bros. Entertainment Inc.  
(s14)

/ culture



Bust of SUPERMAN  
Limited Edition, 1/30  
Collection of DC Comics Super Heroes Store (J.T. Network)

Photo by BH OLIM Pte Ltd



By Lucille Yap

This exhibition is the first and only DC Comics Super Heroes exhibition in Asia held in conjunction with Warner Bros.' celebration of the 75th anniversary of DC Comics Super Hero BATMAN.

Stamps, artworks of comic pages, collectible figurines and models tell the history of how comic super heroes, in particular the DC Comics Super Heroes, were born and how they have impacted the world.

During the 1930s, the world was beset by economic hardship from the Great Depression and the threat of world war. The public in America looked for distraction, for entertainment, and for amusement through motion pictures, magazines, comics, and science fiction. Responding to this need, DC Comics was established in 1934, and after surviving several stumbles, it gave birth to the twin legends of SUPERMAN and BATMAN at the close of the decade. Their creation heralded the Golden Age of Comics; after the 1930s, comics were here to stay.

**LOOK! UP IN THE SKY! IT'S A BIRD!  
IT'S A PLANE! IT'S SUPERMAN!**

In 1938, the struggling comic industry needed a hero, and SUPERMAN came to the rescue. The brainchild of Jerry Siegel [writer] and Joe Shuster [artist], SUPERMAN was launched in *Action Comics* #1 (June 1938). Readers responded with rave reviews and SUPERMAN became the first comic book mega-star. SUPERMAN's runaway popularity earned him his own comic in June 1939. This was a real breakthrough for the time, as characters introduced in comic books had never before been so successful as to warrant their own titles.

- Right: The Jersey Post – UK revealed a set of SUPERMAN (The Man of Steel) Stamps Set on 7 June, 2013:
- 45p - Smartsy (augmented reality app) that provides exclusive bonus material
  - 55p - Transparent material to show his ability to fly and his X-ray vision
  - 60p - Silver foil material reflecting his incredible strength
  - 68p - Heat sensitive monochromatic ink to reveal the earth behind Superman when the stamp is warmed
  - 80p - Crushed granite to give a rough, tactile finish which acknowledges his strength
  - 88p - Glow in the dark invisible ink to reveal a hidden message from Superman's father Jor-El

Singapore Philatelic Museum Collection



Top, from left: *Action Comics* #1 (June 1938)  
*SUPERMAN*'S own comic title, *Superman* #1 (June 1939)

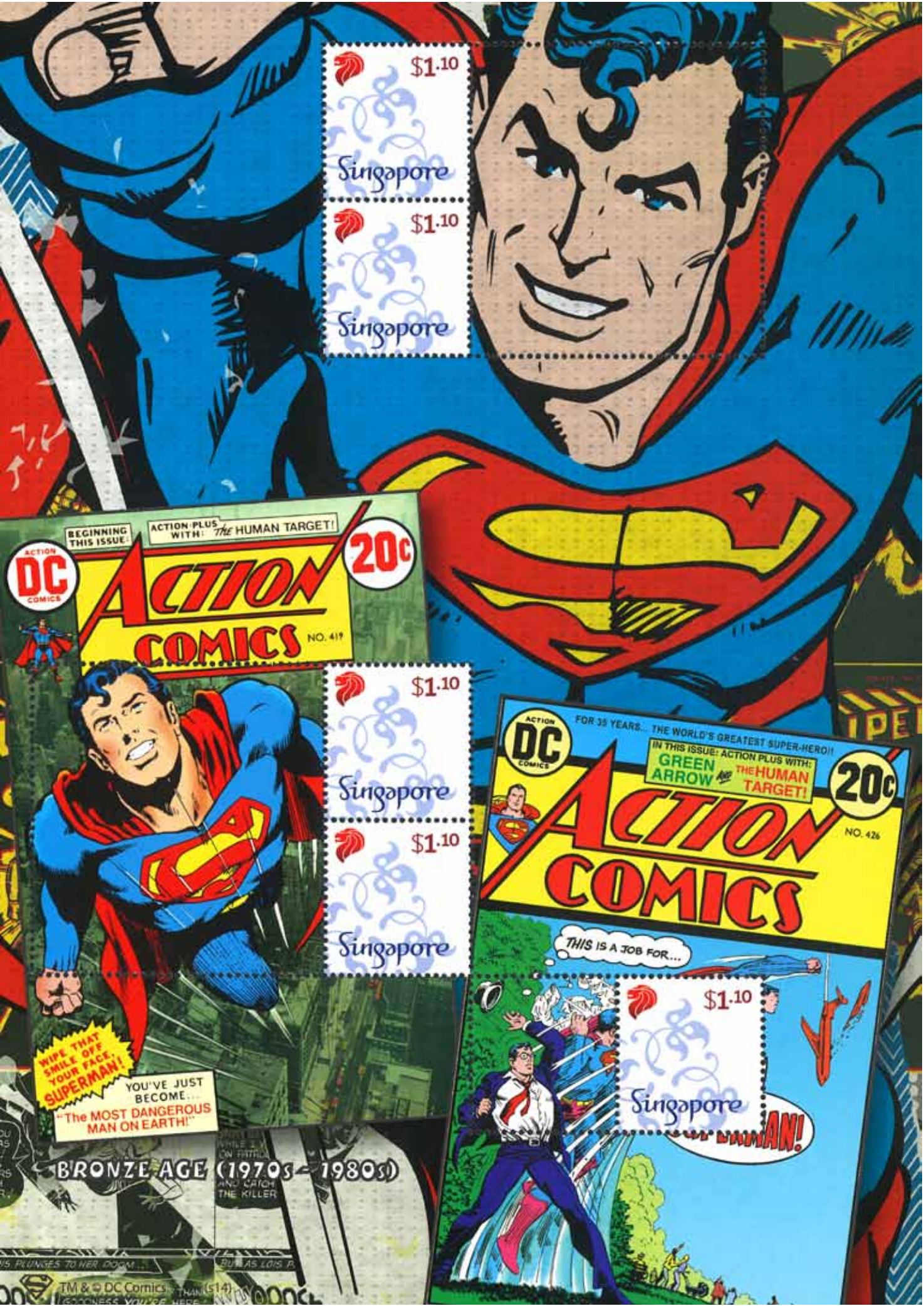


The Origins of SUPERMAN  
Source: DC Super Heroes MyStamp, 2014



Photo by BH OLIM Pte Ltd

Facing page:  
Limited edition Singapore Post SUPERMAN  
MyStamp Collection, Singapore, 2014  
Singapore Philatelic Museum Collection





**THE DARK KNIGHT. THE CAPED CRUSADER. THE WORLD'S GREATEST DETECTIVE.**

Hot on the heels of the runaway success of SUPERMAN, BATMAN debuted in the lead story of *Detective Comics* #27 [May 1939]. It was written by Bill Finger and drawn by Bob Kane. The masked vigilante – unlike SUPERMAN – has no super power. He fights crimes using his intellect, brilliant deductive skill, exceptional martial art skill and combat strategy. He is also equipped with an arsenal of gadgets, weapons, and vehicles, including his Batmobile.

The character was so successful that one year later the first comic book devoted exclusively to the Caped Crusader's adventures, *Batman* #1, hit newsstands. In that issue, BATMAN and his sidekick ROBIN battled THE JOKER and CATWOMAN for the first time.

**BAT-SUIT**

Popularly known as the Bat-suit, BATMAN's outfit is not just a costume. Its main purpose is to act as camouflage and to instil fear. Over the years, its basic design has remained virtually unchanged; however, it has been frequently updated to advance the Dark Knight's war on crime.

The key features of the suit are stealthy black and gray body armour; scalloped cape; cowl with bat-ears; bat logo across his chest, bladed gloves, boots, and utility belt.



Photo by BH OLIM Pte Ltd

Bust of BATMAN  
Limited Edition, 1/30  
Collection of DC Comics Super Heroes Store  
[J.T. Network]



Top, from left:  
*Detective Comics* #27 (May 1939)  
*Self-titled comic Batman* #1 (Apr 1940)

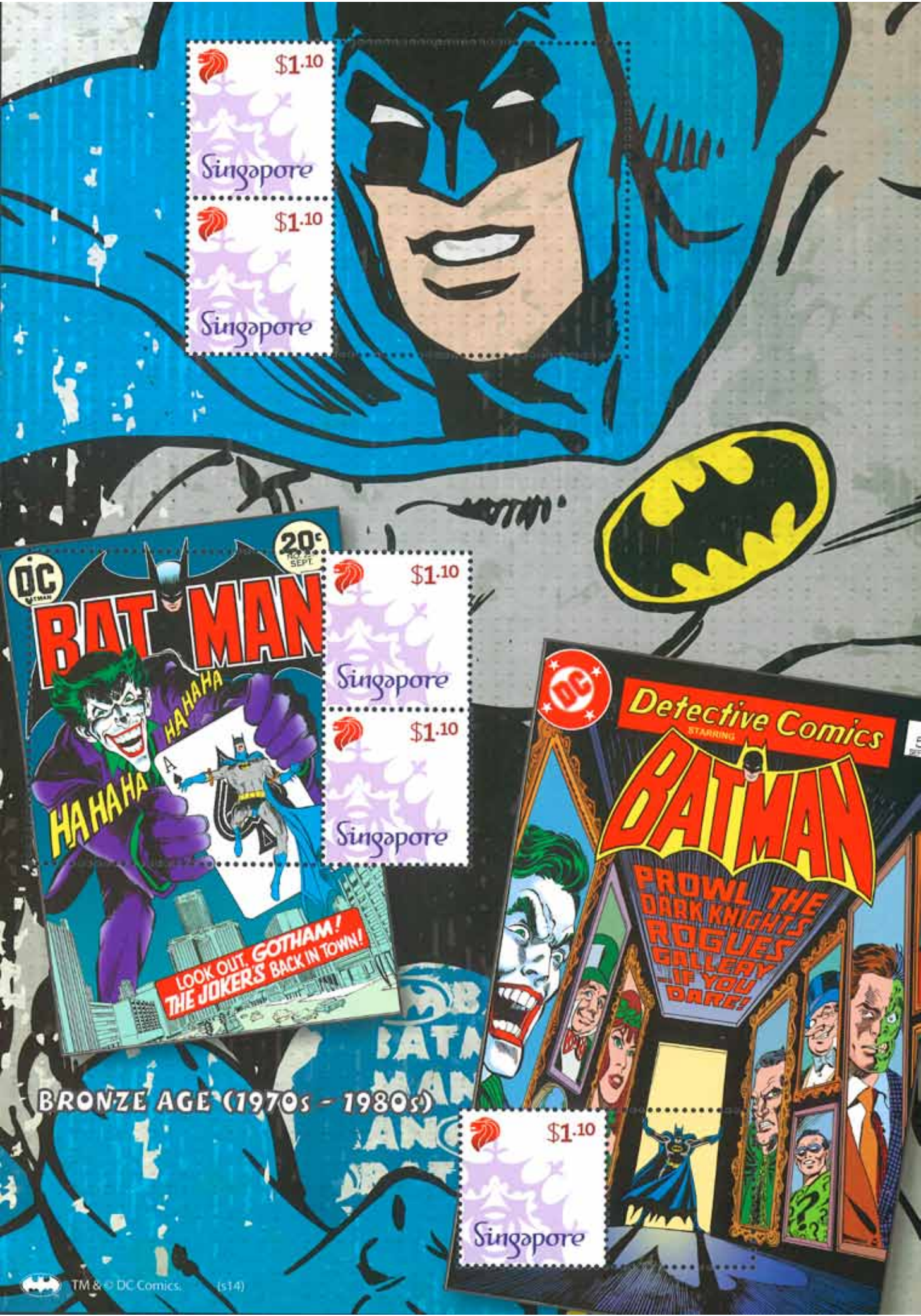


The Origins of BATMAN  
Source: DC Super Heroes MyStamp, 2014



A3-size Stamp Sheet featuring 75 BATMAN Comic Covers  
Limited edition Singapore Post BATMAN 75, MyStamp Collection  
Singapore, 2014.  
Singapore Philatelic Museum Collection

Facing page:  
Limited edition Singapore Post BATMAN MyStamp Collection  
Singapore, 2014.  
Singapore Philatelic Museum Collection







In 1989, BATMAN came back to the big screen after a hiatus of 23 years. The car he used was designed and produced by Tim Burton and Anton Furst. It was created from two Impala chassis and had a Chevy V8 engine.  
*Collection of G&B Comics*

The Batmobile Tumbler was designed by Nathan Crowley and Christopher Nolan for the movie *Batman Begins* in 2005. The Tumbler also made appearances in the subsequent movies *The Dark Knight* in 2008 and *The Dark Knight Rises* in 2012.  
*Collection of G&B Comics*

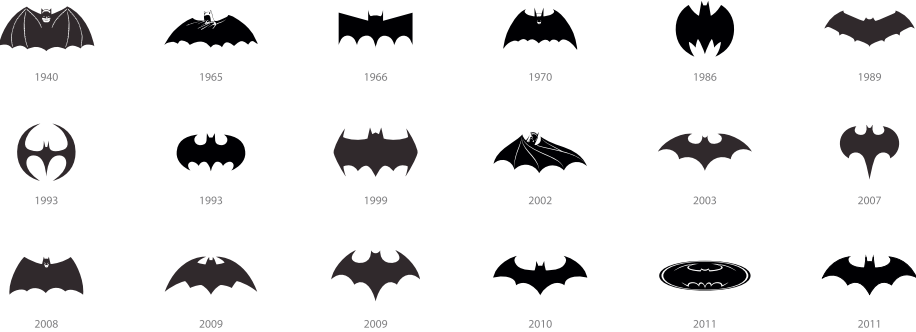
**BATMOBILES**

The first car that BATMAN used was not the Batmobile. It was referred to as a “high-powered” car. The first Batmobile roared into action sporting its own bat-headed battering ram in *Batman #5* in 1941.

Since then, BATMAN has utilised more than one Batmobile to speed into the fray. The first life-size and fully operational Batmobile was built for the television show *Batman* in the 1960s. Nearly two decades later, the Batmobile appeared again on the big screen in a series of BATMAN movies.

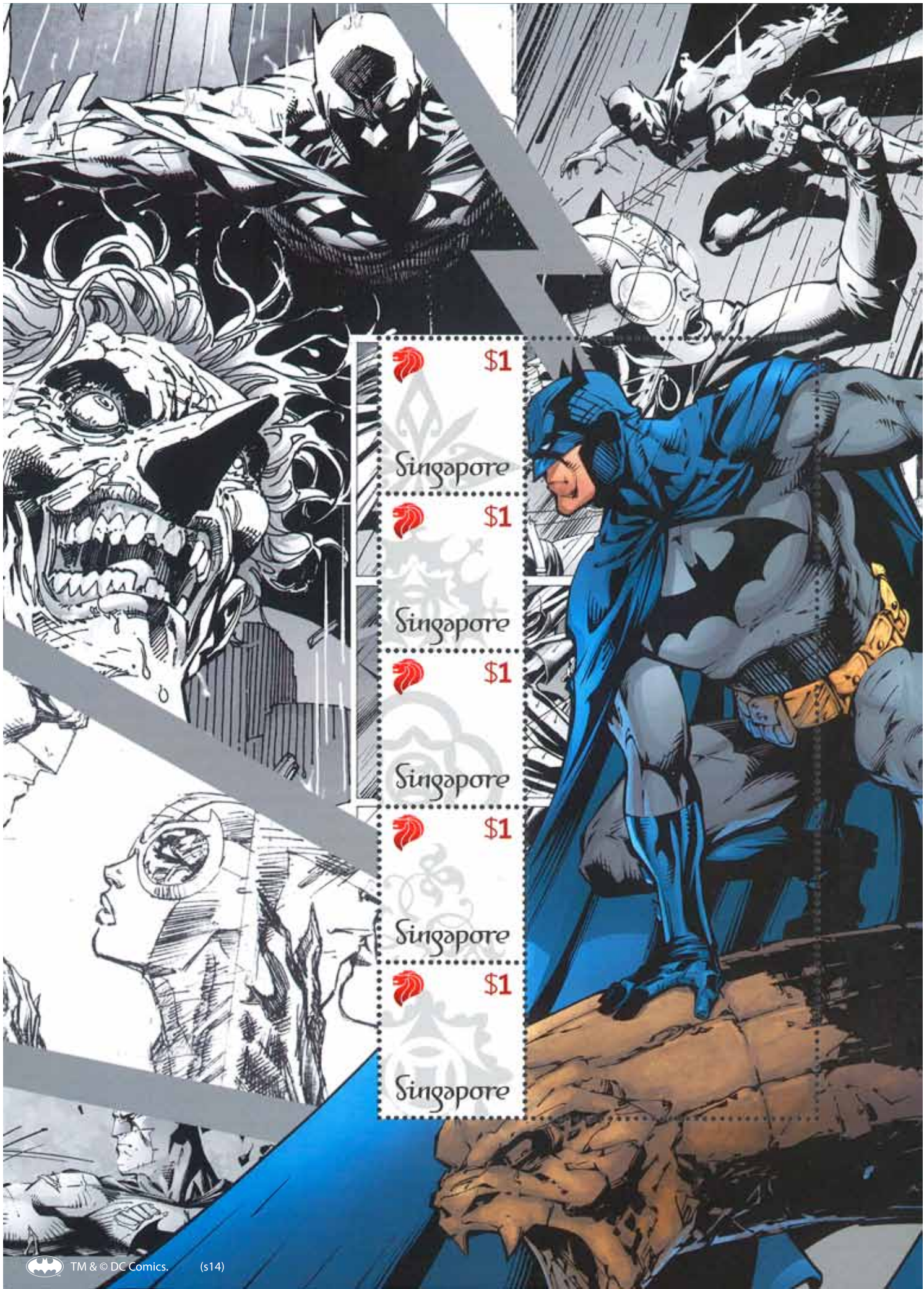


Left & facing page:  
Limited edition  
Singapore Post BATMAN  
75 MyStamp Collection  
Singapore, 2014.  
*Singapore Philatelic  
Museum Collection*



**BAT LOGOS**

Unlike other super heroes' emblems, which are used mainly for identity and branding, the Bat logo has a vital function. It is used as a Bat-Signal when projected onto the skies of Gotham city to summon BATMAN. The Bat logo, however, changed its design over the years. To date, there are more than 30 different versions.





**A PRINCESS, AN AMBASSADOR OF PEACE  
AND A WARRIOR.**

WONDER WOMAN was created by psychologist William Moulton. Readers had a sneak preview of his creation in *All Star Comic #8* in Dec 1941; in January the following year, the character took the lead in *Sensation Comics #1*. By the end of that year, WONDER WOMAN had earned her own title comic. She was the first-ever female super hero in the comic world and was an unusual sight in a male super heroes-dominated industry.



From left to right:  
*All-Star Comics #8* (December 1941)  
*Sensation Comics #1* (January 1942)  
*Wonder Woman #1* (June 1942)

Facing page:  
Limited edition WONDER WOMAN  
MyStamp Collection  
Singapore, 2014  
Singapore Philatelic Museum Collection



The Origins of WONDER WOMAN  
Source: DC Super Heroes MyStamp, 2014





JUSTICE LEAGUE OF AMERICA (JLA)

The Justice League was not the first super heroes team. That was the Justice Society of America. This first league of super heroes in comics history was assembled for the first time in 1940 in *All-Stars Comics Winter Issue #3* [1940]. In early 1960, DC Comics realised that the super heroes archetype was due for revitalisation. Gardner Fox joined with artist Mike Sekowsky to unite the super heroes as *The Justice League of America* against the forces of evil.

JLA made their first appearance in *The Brave and the Bold* #28 in 1960. The founding members of the League were SUPERMAN, BATMAN, WONDER WOMAN, THE FLASH, GREEN LANTERN, AQUAMAN, and MARTIAN MANHUNTER. In less than a year, JLA had their own comic book title. Over the decades, the members of the JLA may have changed, but the team continues to put up good fights and uphold justice.



Top, from left:  
The Justice Society of America in *All-Stars Comics Winter Issue #3* [1940]  
Justice League of America first appearance in *The Brave & the Bold Vol #28* (Feb-Mar, 1960)  
*Justice League of America Vol 1 #1* (Oct - Nov 1960)



Left:  
DC Comics Super Heroes  
USA, 2007  
Singapore Philatelic  
Museum Collection

This sheet includes 20 self-adhesive 39c collectible stamps. Characters include: SUPERMAN, BATMAN, ROBIN, WONDER WOMAN, GREEN LANTERN, GREEN ARROW, AQUAMAN, THE FLASH, PLASTIC MAN, HAWKMAN, HAWKGIRL, and SUPERGIRL. Short bios for the Super Heroes can be found on the backside of the sheet.

Facing page:  
Limited edition THE FLASH and GREEN LANTERN MyStamp Collection  
Singapore, 2014  
Singapore Philatelic  
Museum Collection



THE  
LEAGUE  
AGAINST  
EVIL

UNIQUE EXPERIENCES AT THE EXHIBITION

Visitors can be part of the DC universe while touring the exhibition. They can take interesting Augmented Reality Photohoots with their favourite DC Comics characters by using The League Against Evil@SPM mobile application.

Families can participate in comic drawing as well as 3D modelling workshops and open houses during the exhibition. For details of the programmes and activities, visit the museum website at [www.spm.org.sg](http://www.spm.org.sg).

*The League Against Evil: A DC Super Heroes Exhibition* is held in conjunction with Children's Season 2014. It is a collaborative effort with Singapore Post Limited, Warner Bros. and Pacific Licensing Studio Pte Ltd. Other partners are G&B Comics, Right Here Media, DC Comics Super Heroes Store (J.T. Network), and Toonami. 🌟

» Lucille Yap is Senior Curator,  
Singapore Philatelic Museum